

Southwest Virginia Angus**DOUBLE
HEADER!****Saturday • April 19th, 2025 • Noon
SALE SITE****Washington County Fairgrounds • 17046 Fairground Dr. • Abingdon, VA****To All Beef Producers****DEAR FRIENDS,**

This year we will be selling 50 lots of registered Angus females, which consist of Spring calving pairs, Fall calving pairs, bred heifers and open heifers. There is something for everyone, no matter what time of year your personal preference is for calving.

The twenty-seventh annual version of the Southwest Virginia Angus Performance Tested Spring Bull sale follows the females. They were all fed as a group at G&E Farm in Gretna, VA. They were weighed off test on 3/7/25 and evaluated by a VDACS State Grader. This is a top-notch set of bulls; they averaged 4.15 gain on test and their average 365 day adjusted weight is 1184 lbs. All of the bulls qualified under the Virginia Quality Assurance program and are designated with a VQA symbol underneath the EPDs. Negative BVD PI test at delivery on all bulls. *Look for additional information on the bulls on page 32.*

The sale starts at 12 noon with the females selling first. You are welcome to come by on Friday, April 18th in the afternoon or on Saturday morning prior to the sale to evaluate the cattle being offered for sale. All animals selling in this sale either have no carrier ancestry or have tested AM, CA and/or NH free. We are also on the web at swvaangus.org.

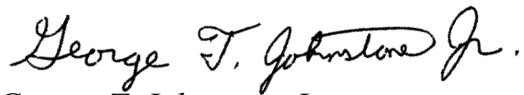
I encourage you to study the pedigrees and performance information on these cattle. Many selling are sired by some of the most proven bulls available in the breed. The consignors of these cattle offered in this sale have been in business for a number of years. They are offering some of their best genetics from which you may select. The EPD's and pedigrees, along with individual performance, will assist you in making your selections.

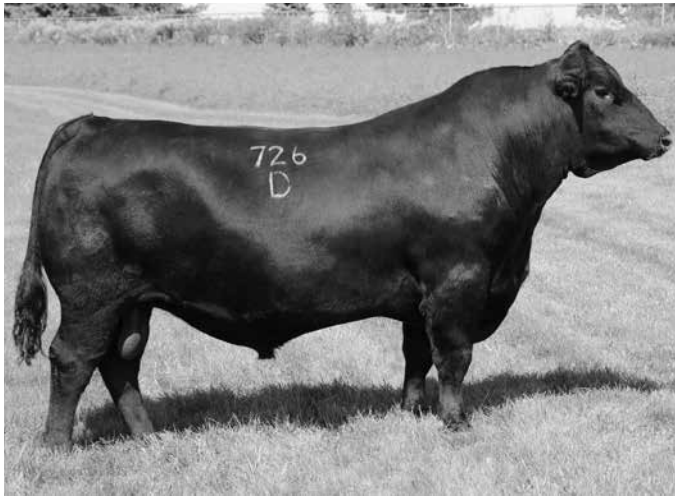
As with our previous sales, if you do not feel comfortable attending in person, we would like to remind you that the sale will also be streamed live on **Cowbuyer.com** where your bids will be received in real time. If you prefer to bid by phone, please contact either Smith Reasor or myself **before sale day** and we will provide you with a number you can call to place your bids that day.

We look forward to seeing you on Saturday, April 19th. Please feel free to contact any of the consignors or the sale coordinator, George T. Johnstone Jr. at 276-620-4901, or the sale auctioneer, Smith Reasor at 276-620-3123.

Southwest Virginia Angus Association hereby reserves the right in its absolute and total discretion to refuse to accept any bid from any person or individual or to issue a bid number for any reason, including but not limited to, a previous instance of non-payment in a Southwest Virginia Angus Association sale.

Sincerely,


George T. Johnstone Jr.



SITZ STELLAR 726D

1
COW **Kow Creek Princess 76 J**
DOB: 3/28/21 Tattoo: 76J Reg# 20786710
QUAKER HILL RAMPAGE 0A36
WILLIAMS RAMPAGE 282
WILLIAMS RITA 71
PROGRESSOR G 33A PROGRESS 27Y
KOW CREEK PRINCESS 76E
KOW CREEK PRINCESS 76B

Consignor: **ACE IN THE HOLE FARM**

| CED | BW | WW | YW | SC | HP | MILK | DOC | CLAW | |
|-------|------|----|------|------|------|------|-----|------|-----|
| 6 | 1.9 | 65 | 114 | 1.54 | 14.3 | 13 | 17 | .54 | |
| ANGLE | PAP | CW | MARB | RE | FAT | \$M | \$W | \$B | \$C |
| .36 | 2.43 | 47 | .83 | .70 | .048 | 66 | 50 | 154 | 266 |

A daughter of the Williams Rampage 282 bull out of a foundation cow at Ace in the Hole. Sells pasture exposed to TTT Fireball 26 whose EPDs are +15 -2.4 +72 +131 +29 \$C+341 (Top 4% of the Angus breed). Breeding update sale day.

2
COW **Kow Creek Princess 76E**
DOB: 10/25/17 Tattoo: 76E Reg# 20009261
G A R PROGRESS
PROGRESSOR G 33A PROGRESS 27Y
ERICA G 27Y MENTOR 19W
LUCAS VT OBJECTIVE T1680
KOW CREEK PRINCESS 76B
KOW CREEK PRINCESS 706

Consignor: **ACE IN THE HOLE FARM**

| CED | BW | WW | YW | SC | HP | MILK | DOC | CLAW | |
|-------|------|----|------|------|------|------|-----|------|-----|
| 9 | 1.2 | 57 | 100 | 1.43 | 5.9 | 19 | 25 | .62 | |
| ANGLE | PAP | CW | MARB | RE | FAT | \$M | \$W | \$B | \$C |
| .49 | 2.96 | 29 | .96 | .69 | .043 | 41 | 49 | 144 | 228 |

A foundation cow from the Princess cow family. A granddaughter of G A R Progress. One of her sons is a senior herd sire at Randall Williams' Ace in the Hole Farm. Sells pasture exposed to TTT Fireball 26, the GB Fireball 672 son seeing heavy use in Randall's herd. Breeding update sale day.

3
COW **B G S Rita 952**
DOB: 12/7/22 Tattoo: 952 Reg# 20778445

MOHNEN SUBSTANTIAL 272
SITZ STELLAR 726D
SITZ PRIDE 200B

PVF INSIGHT 0129
B G S RITA 806
B G S RITA 726

Consignor: **B G S ANGUS**

| CED | BW | WW | YW | SC | HP | MILK | DOC | CLAW | |
|-------|-------|----|------|-----|------|------|-----|------|-----|
| 6 | -.2 | 63 | 114 | .57 | 10.1 | 19 | 15 | .38 | |
| ANGLE | PAP | CW | MARB | RE | FAT | \$M | \$W | \$B | \$C |
| .47 | -1.15 | 49 | .41 | .72 | .039 | 49 | 51 | 143 | 234 |

Balanced EPDs on this young Sitz Stellar 726D daughter. Her dam is from the Rita cow family at B G S Angus. She has a bull calf born 2/1/25 by G V F Enhance 3092 whose EPDs are +13 +.2 +77 +149 +40 \$B+169 \$C+263. 3092's YW (+149) and \$W (+80) are in the Top 10% of the Angus breed.

4
COW **B G S Flower 940**
DOB: 10/8/22 Tattoo: 940 Reg# 20745187
G A R SURE FIRE
G A R DUAL THREAT
G A R DAYBREAK A3010
DEER VALLEY WALL STREET
B G S FLOWER 895
G V F FLOWER 1047

Consignor: **B G S ANGUS**

| CED | BW | WW | YW | SC | HP | MILK | DOC | CLAW | |
|-------|------|----|------|------|------|------|-----|------|-----|
| 11 | -.1 | 62 | 105 | .84 | 16.0 | 29 | 17 | .39 | |
| ANGLE | PAP | CW | MARB | RE | FAT | \$M | \$W | \$B | \$C |
| .36 | -.37 | 50 | 1.02 | 1.14 | .025 | 89 | 69 | 181 | 324 |

Nice EPDs on this young female who shows many Pathfinders in her pedigree. She is sired by the popular G A R Dual Threat. Her dam is from the Flower cow family and was sired by Deer Valley Wall Street. 940 has a bull calf born 2/1/25 by G V F Enhance 3092 Reg#20712090.



G A R PROGRESS

5A Lady Sunshine Flagship

DOB: 3/6/24 Tattoo: 4716 Reg# 21010749

COW

GB FIREBALL 672

YON FLAGSHIP

YON QUEEN G1085

G A R SUNRISE

MAF GAR SUNRISE 716

MAF 712 OF 102 X BIG EYE

CK TANGUB ANGUS

Consignor:

| CED | BW | WW | YW | SC | HP | MILK | DOC | CLAW | |
|-------|------|----|------|-----|-------|------|-----|------|-----|
| 16 | -.5 | 68 | 124 | .27 | 10.9 | 24 | 28 | .41 | |
| ANGLE | PAP | CW | MARB | RE | FAT | \$M | \$W | \$B | \$C |
| .46 | 2.08 | 46 | 1.11 | .86 | -.007 | 57 | 62 | 180 | 290 |

4716 comes from the elite line of GV Fireball and the GAR Sunrise lines. She sells open and ready to breed. Her sire, Yon Flagship the exciting young bull - which sold for \$66,000 for 2/3 interest to Knoll Crest Farms, co-owned by Yon Family Farms of South Carolina. Flagship has a negative birth weight and is in the top 3% of yearling weight. Flagship is truly one of the young elite bulls to come in and will be producing wonderful cows in the years to come.

5B LPH Blackcap 360

DOB: 11/1/23 Tattoo: 360 Reg# 20849663

COW

S A V RAINFALL 6846

SQUARE B TRUE NORTH 8052

ELBANNA OF CONANGA 1209

WERNER FLAT TOP 4136

LPH BLACKCAP 051

LPH BLACKCAP 900

CK TANGUB ANGUS

Consignor:

| CED | BW | WW | YW | SC | HP | MILK | DOC | CLAW | |
|-------|------|----|------|-----|------|------|-----|------|-----|
| 12 | -1.5 | 55 | 105 | .71 | 10.2 | 33 | 23 | .48 | |
| ANGLE | PAP | CW | MARB | RE | FAT | \$M | \$W | \$B | \$C |
| .48 | -.97 | 39 | .74 | .90 | .044 | 73 | 60 | 151 | 269 |

Blackcap 360 is a young sturdy heifer from the Legacy of Pine Hill Farm herd. She traces her roots from Square B True North and SAV Rainfall. Her dam comes from Werner Flat Top 4136. She is open and ready to be bred to your bull of choice.



QUAKER HILL RAMPAGE 0A36



G A R SUNRISE

6 CK Ginger Hill Knockout

DOB: 9/8/22 Tattoo: 2828 Reg# 20468007

COW

GINGER HILL BLACK BORE 616

GINGER HILL KNOCKOUT 066

GINGER HILL HELEN 808

COLE CREEK 7 BLACK 335

GINGER HILL BLACKBIRD 828

GINGER HILL BLACKBIRD 572

CK TANGUB ANGUS

Consignor:

| CED | BW | WW | YW | SC | HP | MILK | DOC | CLAW | |
|-------|-----|----|------|----|-----|------|-----|------|-----|
| 2 | 3.2 | 61 | 104 | | | 26 | | | |
| ANGLE | PAP | CW | MARB | RE | FAT | \$M | \$W | \$B | \$C |
| | | | | | | 64 | 50 | | |

2828 is an exciting young heifer out of the Ginger Hill Farms from the Ginger Hill Knockout bull from the Black Bore line. Her dam is from the Ginger Hill Blackbird line that has produced tremendous cattle over the years. She sells bred to Yon Flagship - the exciting young bull - which sold for \$66,000 for 2/3 interest to Knoll Crest Farms, co-owned by Yon Family Farms of South Carolina. Flagship has a negative birth weight and is in the top 3% of yearling weight. Flagship is truly one of the young elite bulls to come in and will be producing wonderful cows in the years to come. She is due to calve 4/5/25.

7A Darnells Stunner 258

DOB: 8/7/24 Tattoo: 258 Reg# 21072043

COW

MUSGRAVE 316 STUNNER

M C STUNNER 909

M C BLACKCAP 0070

WILLIAMS RAMPAGE 230

WHC HYLITE RAM 480

WILLIAMS PROP HYLITE 243

DARNELL ANGUS

Consignor:

| CED | BW | WW | YW | SC | HP | MILK | DOC | CLAW | |
|-------|------|----|------|------|------|------|-----|------|-----|
| 8 | 2.4 | 87 | 153 | 1.35 | 12.8 | 27 | 16 | .32 | |
| ANGLE | PAP | CW | MARB | RE | FAT | \$M | \$W | \$B | \$C |
| .32 | -.13 | 85 | .69 | 1.45 | .004 | 77 | 79 | 197 | 333 |

Offering a top 15% claw epd. This young and stout made Musgrave Stunner 316 granddaughter has the makings to become an excellent production female in your herd.

7B Darnells Stunner 256

DOB: 6/25/24 Tattoo: 256 Reg# 21072042

COW

MUSGRAVE 316 STUNNER
M C STUNNER 909
 M C BLACKCAP 0070

E W A PEYTON 642
DARNELL'S ERICA PEYTON 133
 POWELL ERICA 7320

DARNELL ANGUS

Consignor:

| CED | BW | WW | YW | SC | HP | MILK | DOC | CLAW | |
|-------|-----|----|------|-----|------|------|-----|------|-----|
| 1 | 4.5 | 83 | 147 | .22 | 10.9 | 29 | 12 | .32 | |
| ANGLE | PAP | CW | MARB | RE | FAT | \$M | \$W | \$B | \$C |
| .36 | .96 | 65 | 1.10 | .36 | .072 | 53 | 67 | 176 | 281 |

A deep bodied heifer coming from the Erica cow family, she goes back to the elite donor Williams Prop Erica 255-139. She offers a top 10% WW and YW.



MUSGRAVE 316 STUNNER

7C Darnells Stunner 253

DOB: 6/8/24 Tattoo: 253 Reg# 21072063

COW

MUSGRAVE 316 STUNNER
M C STUNNER 909
 M C BLACKCAP 0070

POWELL PEYTON 8705
DARNELLS PP MATRIX 180
 BW LADY LAUREL 903

DARNELL ANGUS

Consignor:

| CED | BW | WW | YW | SC | HP | MILK | DOC | CLAW | |
|-------|-----|----|------|------|------|------|-----|------|-----|
| 8 | .9 | 77 | 138 | -.51 | 11.7 | 27 | 23 | .55 | |
| ANGLE | PAP | CW | MARB | RE | FAT | \$M | \$W | \$B | \$C |
| .39 | .58 | 54 | .57 | .44 | .041 | 67 | 75 | 152 | 264 |

A smooth made Musgrave 316 Stunner granddaughter. She comes from a daughter of Lady Laurel 903, who was a foundational female in our herd.



BYERGO BLACK MAGIC 3348

8 DMB Forever Lady 212

DOB: 1/11/22 Tattoo: 212 Reg# 20353865

COW

V A R LEGEND 5019
SCHAACK WICKWIRE 8344
 WOODSIDE RITA 4P10 OF 1351

WHITESTONE INTUITION C106
DMB FOREVER LADY 310
 DMB FOREVER LADY 1018

DMB ANGUS

Consignor:

| CED | BW | WW | YW | SC | HP | MILK | DOC | CLAW | |
|-------|------|----|------|------|------|------|-----|------|-----|
| 8 | .2 | 69 | 125 | 1.25 | 17.2 | 23 | 14 | .64 | |
| ANGLE | PAP | CW | MARB | RE | FAT | \$M | \$W | \$B | \$C |
| .55 | 1.77 | 41 | 1.09 | .18 | .040 | 78 | 68 | 147 | 269 |

A nice three year old from the ever popular Forever Lady cow family. She did a good job on her first calf and has a lot of life left in front of her. She sells pasture exposed to DMB Iconic 712 (Reg #20353876).

9 DMB Forever Lady 1111

DOB: 1/28/21 Tattoo: 1111 Reg# 20047154

COW

BYERGO BLACK MAGIC 3348
DMB BLACK MAGIC 519
 ROCK RIDGE BLOSSOM 2060

PVF INSIGHT 0129
DMB FOREVER LADY 916
 MGSA FOREVER LADY 6010

DMB ANGUS

Consignor:

| CED | BW | WW | YW | SC | HP | MILK | DOC | CLAW | |
|-------|-----|----|------|------|------|------|-----|------|-----|
| 7 | 2.6 | 65 | 120 | 1.62 | 13.7 | 26 | 12 | .46 | |
| ANGLE | PAP | CW | MARB | RE | FAT | \$M | \$W | \$B | \$C |
| .53 | .76 | 47 | .54 | .39 | .047 | 54 | 55 | 137 | 232 |

Another female from the Forever Lady cow family, she come to you as a four year old that has been a solid producer for us. She has an average weaning ratio of 106. She sells with a bull calf born 3/14/25 sired by DMB Iconic 712 (Reg#20353876).

10 DMB Forever Lady 310

DOB: 1/14/20 Tattoo: 310 Reg# 19725303
COW

MUSGRAVE FOUNDATION
WHITESTONE INTUITION C106
BOYD CHLOE 0031

S A V TEN VOLT 3039
DMB FOREVER LADY 1018
DMB FOREVER LADY 916

Consignor: DMB ANGUS

| CED | BW | WW | YW | SC | HP | MILK | | DOC | CLAW |
|-------|------|----|------|------|------|------|-----|-----|------|
| 7 | .5 | 72 | 124 | 1.05 | 16.0 | 14 | | 14 | .62 |
| ANGLE | PAP | CW | MARB | RE | FAT | \$M | \$W | \$B | \$C |
| .52 | -.28 | 47 | .18 | .46 | .005 | 48 | 56 | 130 | 217 |

Rounding out with the third Forever Lady female. She is a five year old and the mother of 212 in this sale. As you may be able to tell we like the Forever Lady cow family. She sells with a bull calf, sired by DMB Iconic 712 (Reg#20353876) born 3/16/25.

11A Double Heart Rita M728

DOB: 7/4/24 Tattoo: M728 Reg# 20996176
COW

G A R HOME TOWN
SEO DOUBLE HEART HT K84A
LINZ LADY 6176-9128

SYDGEN C C & 7
DH LADY 728
ZWT LADY 2558

Consignor: DOUBLE HEART FARM

| CED | BW | WW | YW | SC | HP | MILK | | DOC | CLAW |
|-------|------|----|------|------|------|------|-----|-----|------|
| 13 | -1.4 | 59 | 111 | 1.51 | 12.2 | 41 | | 27 | .51 |
| ANGLE | PAP | CW | MARB | RE | FAT | \$M | \$W | \$B | \$C |
| .45 | .30 | 57 | .89 | .97 | .008 | 61 | 68 | 185 | 301 |

M728's Dam is still one of the best calf raisers on our farm, she has tremendous length of body and a great udder, her calves always come to the top, This heifer calf goes back to the \$28000.00 Sinclair Lady 3M19 4465 proclaimed as the deepest bodied cow in America by ZWT Ranchers, There is no reason this heifer shouldn't make a great producer sired by a Hometown son, sells open.



G A R HOME TOWN



A A R TEN X 7008 S A

11B Double Heart Isabel M3

DOB: 6/14/24 Tattoo: M3 Reg# 20975641
COW

G A R HOME TOWN
SEO DOUBLE HEART HT K84A
LINZ LADY 6176-9128

HOOVER NO DOUBT
POINT P ISABEL 5219
BALDRIDGE ISABEL B758

Consignor: DOUBLE HEART FARM

| CED | BW | WW | YW | SC | HP | MILK | | DOC | CLAW |
|-------|------|----|------|------|------|------|-----|-----|------|
| 13 | -1.5 | 61 | 117 | 1.83 | 14.3 | 30 | | 29 | .53 |
| ANGLE | PAP | CW | MARB | RE | FAT | \$M | \$W | \$B | \$C |
| .41 | 1.39 | 58 | 1.15 | 1.10 | .016 | 74 | 61 | 191 | 322 |

The Dam of Isabel M3 produced the top selling heifer w/calf in SWVA sale demanding \$4600.00. This Isabel family has great feet and docility ranks in the top 10% of the Angus breed. Isabel M3 17 traits in the top 25% of the breed including Marbling and Ribeye sells open.

11C Double Heart Rita M35

DOB: 6/4/24 Tattoo: M35 Reg# 20975640
COW

G A R HOME TOWN
SEO DOUBLE HEART HT K84A
LINZ LADY 6176-9128

DIABLO DELUXE 1104
DH RITA DELUXE J35
DH GAR COMPLETE 813

Consignor: DOUBLE HEART FARM

| CED | BW | WW | YW | SC | HP | MILK | | DOC | CLAW |
|-------|------|----|------|------|------|------|-----|-----|------|
| 11 | -.1 | 74 | 141 | 1.87 | 14.7 | 33 | | 29 | .52 |
| ANGLE | PAP | CW | MARB | RE | FAT | \$M | \$W | \$B | \$C |
| .48 | 1.01 | 74 | 1.38 | .96 | .009 | 63 | 69 | 222 | 351 |

M35 boosts 23 traits in the top 25% of the Angus breed her Grand Dam DH Gar Complete 813 was our best donor to date she produced multiple heifers over \$10,000.00 with her latest calf selling for \$8500.00 M35 has a \$B223 and \$C353 top 4% of the breed sells open.

12 Double Heart Barbara 8521

DOB: 8/28/18 Tattoo: 8521 Reg# 19220040

COW

SYDGEN EXCEED 3223
SYDGEN ENHANCE
 SYDGEN RITA 2618

S A V HARVESTOR 0338

DH BARBARA 521

DH BARBARA 004

DOUBLE HEART FARM

Consignor:

| CED | BW | WW | YW | SC | HP | MILK | | DOC | CLAW |
|-------|------|----|------|------|-------|------|-----|-----|------|
| -6 | 5.5 | 79 | 136 | 1.19 | 11.2 | 22 | 25 | .41 | |
| ANGLE | PAP | CW | MARB | RE | FAT | \$M | \$W | \$B | \$C |
| .46 | 4.69 | 55 | .89 | .54 | -.021 | 58 | 58 | 161 | 267 |

8521 is a big footed cow that traces back to the famed Stiz Barbara Perfection 1882 that produced over \$250,000.00 progeny, she has tremendous width and depth of body. Pasture exposed from 12/17/24 to Double Heart Promogen L83 AAA# 20784174 checked by Veterinarian 3/5/25 to be safe in calf.

13 DH Barbara Perfection 793

DOB: 5/30/17 Tattoo: 793 Reg# 19069747

COW

EMULATION N BAR 5522

DH LADY'S EMULATION 5522 3R2

SINCLAIR LADY 3R2 4465

S A V 8180 TRAVELER 004

DH BARBARA 004

THREE TREES BARBARA 2161

DOUBLE HEART FARM

Consignor:

| CED | BW | WW | YW | SC | HP | MILK | | DOC | CLAW |
|-------|-----|----|------|-----|------|------|-----|-----|------|
| 2 | 1.8 | 48 | 82 | .23 | 12.8 | 25 | 16 | .52 | |
| ANGLE | PAP | CW | MARB | RE | FAT | \$M | \$W | \$B | \$C |
| .50 | .33 | 29 | .36 | .29 | .005 | 60 | 46 | 98 | 187 |

793 is another Big cow that traces back to the Famed Sitz Barbara Perfection 1882 that produced over \$250,000.00 progeny. This cow also has the famed Emulation NBAR 5522 sire of EXT lintage. Pasture exposed from 12/17/24 to Double Heart Promogen L83 AAA# 20784174 checked by Veterinarian 3/5/25 to be safe in calf.



SITZ VERDICT 744H



SYDGEN ENHANCE

14 Gragg Miss Cheyenne 2054

DOB: 2/19/22 Tattoo: 2054 Reg# 20618833

COW

LD CAPITALIST 316

SITZ VERDICT 744H

SITZ HENRIETTA PRIDE 226Y

SINCLAIR EXTRAVAGANT 6X7

GF MISS CHEYENNE X006

GF MISS CHEYENNE 8023

GRAGG FARMS

Consignor:

| CED | BW | WW | YW | SC | HP | MILK | | DOC | CLAW |
|-------|-----|----|------|-----|------|------|-----|-----|------|
| 5 | 1.4 | 74 | 127 | | 11.0 | 25 | | | |
| ANGLE | PAP | CW | MARB | RE | FAT | \$M | \$W | \$B | \$C |
| | | 52 | .64 | .47 | .033 | 71 | 63 | 158 | 276 |

2054 is a female we are only selling because she is outside the calving window. She is from a third generation Pathfinder dam who traces back to a full sister of B C C Bushwacker 41-93. X006 had a WR 11 @ 102, YR 6 @ 103. 2054's WR is 1 @ 105 while her individual performance was WR 100, YR 108. She was ultrasounded 6.5-7 months in March with a calf by Gragg Dakota 327G (#20815078).

15 Gragg Everelda Entense 2050

DOB: 2/18/22 Tattoo: 2050 Reg# 20618839

COW

LD CAPITALIST 316

SITZ VERDICT 744H

SITZ HENRIETTA PRIDE 226Y

G A R PREDESTINED

GF EVERELDA ENTENSE 8040

SITZ EVERELDA ENTENSE 2799

GRAGG FARMS

Consignor:

| CED | BW | WW | YW | SC | HP | MILK | | DOC | CLAW |
|-------|-----|----|------|------|------|------|-----|-----|------|
| 4 | 1.9 | 69 | 114 | 1.14 | 13.4 | 27 | 8 | .44 | |
| ANGLE | PAP | CW | MARB | RE | FAT | \$M | \$W | \$B | \$C |
| .43 | .45 | 54 | .79 | .67 | .038 | 59 | 65 | 150 | 254 |

2050 is another female we are selling because she fell out of our calving window. She has a weaning ratio of 1 @ 102 while carrying an individual performance of WR 113, YR 105. Her 16-year-old dam achieved and maintained Pathfinder status until she died last year with WR of 15 @ 107, YR 10 @ 107. 2050 was ultrasounded 7 months in March with a calf by Gragg Dakota 327G (#20815078).

16 Gragg Everelda Entense 1109

DOB: 8/28/21 Tattoo: 1109 Reg# 20373601

COW

SITZ LOGO 12964

M1P SITZ LOGO 8148

SITZ BARBARAMERE NELL 912

COLEMAN KNIGHT 209

GRAGG EVERELDA ENTENSE 6117

GF EVERELDA ENTENSE 2048

GRAGG FARMS

Consignor:

| CED | BW | WW | YW | SC | HP | MILK | | DOC | CLAW |
|-------|------|----|------|------|------|------|-----|-----|------|
| -2 | 3.8 | 68 | 117 | 1.17 | 13.2 | 27 | | 7 | .37 |
| ANGLE | PAP | CW | MARB | RE | FAT | \$M | \$W | \$B | \$C |
| .45 | 1.31 | 39 | .38 | .47 | .032 | 67 | 56 | 111 | 211 |

1109 combines the Everelda Entense, Donna, and Shauna families. While carrying an individual WR of 99, she has a WR of 1 @ 107. Her dam had a WR of 5 @ 99. She was ultrasounded with a calf by Gragg Doc 8119G (#19938223) that is due near sale date.

17 Gragg Barbaramere Jet 0037

DOB: 2/18/20 Tattoo: 0037 Reg# 20049385

COW

SITZ ALLIANCE 6595

KMK ALLIANCE 6595 I87

G A R EXT 916

SINCLAIR EXTRAVAGANT 6X7

GF BARBARAMERE JET X015

GF BARBARAMERE JET 4019

GRAGG FARMS

Consignor:

| CED | BW | WW | YW | SC | HP | MILK | | DOC | CLAW |
|-------|------|----|------|------|------|------|-----|-----|------|
| -3 | 3.2 | 64 | 100 | 1.24 | 13.7 | 24 | | 9 | .41 |
| ANGLE | PAP | CW | MARB | RE | FAT | \$M | \$W | \$B | \$C |
| .50 | 1.26 | 36 | .24 | .15 | .056 | 67 | 59 | 111 | 211 |

0037 comes from a productive cow family for us. She carries an individual WR of 121, YR of 106. Her WR is 2 @ 96. X015, the dam of this female, had a WR of 7 @ 110, YR of 7 @ 107. She was ultrasounded with a calf by either Gragg Anthem 2135G (#20690297) or Gragg Anthem 2146G (#20692096) that is due near sale date.



WOODHILL BLUEPRINT



SITZ LOGO 8148

18 KAF Miss Blackcap 220

DOB: 4/20/22 Tattoo: 220 Reg# 20503871

COW

WOODHILL BLUEPRINT

G V F CALIBER

G V F RUBY 5094

S S NIAGARA Z29

KAF MISS BLACKCAP 003

POWELL BLACKCAP 6303

KING ANGUS FARM

Consignor:

| CED | BW | WW | YW | SC | HP | MILK | | DOC | CLAW |
|-------|------|----|------|------|-------|------|-----|-----|------|
| 5 | 1.5 | 83 | 131 | 1.18 | 17.2 | 38 | | 27 | .53 |
| ANGLE | PAP | CW | MARB | RE | FAT | \$M | \$W | \$B | \$C |
| .48 | -.71 | 64 | .45 | .67 | -.026 | 88 | 94 | 147 | 279 |

A well balanced and attractive performance female out of a Niagara dam. Her \$ M EPD ranks her in the top 5% in the breed and her \$ weaning EPD ranks her in the top 1%. Sells with a heifer calf born 2/22/25 by GVF Maga 0066 (19796295), birth weight 64 lbs.

19 KAF Miss Pride 219

DOB: 4/15/22 Tattoo: 219 Reg# 20503902

COW

WOODHILL BLUEPRINT

G V F CALIBER

G V F RUBY 5094

JINDRA ACCLAIM

KAF MISS PRIDE 906

K A F PRIDE 032

KING ANGUS FARM

Consignor:

| CED | BW | WW | YW | SC | HP | MILK | | DOC | CLAW |
|-------|-----|----|------|-----|-------|------|-----|-----|------|
| 6 | 3.1 | 69 | 118 | .83 | 9.9 | 25 | | 18 | .42 |
| ANGLE | PAP | CW | MARB | RE | FAT | \$M | \$W | \$B | \$C |
| .41 | .94 | 57 | .30 | .95 | -.033 | 53 | 58 | 152 | 250 |

Extra growth in this Caliber daughter. No extreme EPD numbers here, but a lot of balance in this young cow. Sells with a GVF Maga (19796295) bull calf born 12-23-24, birth weight 69 lbs, bred 3-24-25 to Woodhill Endurance (19756971).

20 KAF Miss Evergreen 132

DOB: 11/22/21 Tattoo: 132 Reg# 20504010

COW

BASIN PAYWEIGHT 1682
DEER VALLEY GROWTH FUND
 DEER VALLEY RITA 36113

BARSTOW BANKROLL B73
KAF MISS EVERGREEN 801
 K A F MISS EVERGREEN 842

KING ANGUS FARM

Consignor:

| CED | BW | WW | YW | SC | HP | MILK | DOC | CLAW | |
|-------|-----|----|------|------|------|------|-----|------|-----|
| 5 | 3.2 | 94 | 158 | 1.11 | 15.8 | 20 | 16 | .47 | |
| ANGLE | PAP | CW | MARB | RE | FAT | \$M | \$W | \$B | \$C |
| .43 | .72 | 74 | .78 | .67 | .038 | 67 | 76 | 175 | 294 |

A highly productive Growth Fund daughter that's sure to add growth and performance in any situation. Her weaning weight EPD ranks in the 25% of the breed and her yearling weight EPD ranks in the top 4%. Sells with a Tehama Patriach daughter born 9/2/24 weighing 60 pounds. Bred 2-9-25 to Woodhill Endurance 19756971.



DEER VALLEY GROWTH FUND

21A Lawsons Chloe M1443

DOB: 5/4/24 Tattoo: M1443 Reg# 21109597

COW

S A V RENOWN 3439
LAWSONS DEMARINI E131
 COLEMAN DONNA 407

DEER VALLEY GROWTH FUND
LAWSONS CHLOE K1011
 LAWSONS CHLOE G522

LAWSON FAMILY FARMS

Consignor:

| CED | BW | WW | YW | SC | HP | MILK | DOC | CLAW | |
|-------|------|----|------|------|------|------|-----|------|-----|
| 14 | -1.1 | 70 | 130 | -.29 | 16.5 | 26 | 23 | .47 | |
| ANGLE | PAP | CW | MARB | RE | FAT | \$M | \$W | \$B | \$C |
| .49 | 2.71 | 47 | .22 | .85 | .041 | 78 | 72 | 122 | 236 |

A daughter of Lawsons Demarini E131 out of a first-calf Deer Valley Growth Fund daughter out of the Chloe cow family. Top 4% CED, Top 10% BW, Top 15% \$M. Sells open.

21B Lawsons Chloe M1440

DOB: 4/6/24 Tattoo: M1440 Reg# 21109596

COW

SITZ STELLAR 726D
SITZ STELLAR 715G
 SITZ BARBARAMERE JET 171E

DEER VALLEY GROWTH FUND
LAWSONS CHLOE G600
 LAWSONS CHLOE A467

LAWSON FAMILY FARMS

Consignor:

| CED | BW | WW | YW | SC | HP | MILK | DOC | CLAW | |
|-------|------|----|------|------|------|------|-----|------|-----|
| 2 | 1.5 | 91 | 160 | 1.06 | 10.2 | 25 | 15 | .29 | |
| ANGLE | PAP | CW | MARB | RE | FAT | \$M | \$W | \$B | \$C |
| .36 | 1.55 | 76 | 1.06 | .61 | .058 | 61 | 81 | 181 | 296 |

Young Sitz Stellar 715G daughter out of the Chloe cow family. Top 4% WW, Top 3% YW, Top 1% CLAW, Top 10% Angle along with Top 10% CW and \$W, Top 25% \$C. Sells open.

21C Lawsons Elba M1431

DOB: 3/19/24 Tattoo: M1431 Reg# 21109594

COW

S A V RENOWN 3439
LAWSONS DEMARINI E131
 COLEMAN DONNA 407

DEER VALLEY GROWTH FUND
LAWSONS ELBA K992
 FOSTER ELBA E329

LAWSON FAMILY FARMS

Consignor:

| CED | BW | WW | YW | SC | HP | MILK | DOC | CLAW | |
|-------|-----|----|------|-----|------|------|-----|------|-----|
| 12 | -.9 | 75 | 140 | .60 | 13.3 | 28 | 26 | .49 | |
| ANGLE | PAP | CW | MARB | RE | FAT | \$M | \$W | \$B | \$C |
| .51 | .63 | 59 | -.06 | .47 | .063 | 63 | 73 | 117 | 215 |

Super nice female out of the last calf crop of Lawsons Demarini E131's calves at Lawsons. Out of a first-calf Deer Valley Growth Fund daughter who is out of the Elba cow family. Top 10% CED, VW along with Top 25% WW, Top 20% YW. The Demarini daughters have made super cows. Easy fleshing with super dispositions along with calving ease and moderate birth weight with extreme body length and depth that carry really nice udders. What you expect when you combine SAV Blackcap May 4135, Coleman Donna 407, GAR EXT 614 and SAV Elba 1094 in a pedigree. Sells open.



S A V RENOWN 3439

22A Lawsons Henrieta Pride M1429
 COW

DOB: 3/13/24 Tattoo: M1429 Reg# 21109592
 T K STUNNER F655B
LAWSONS TOP SHELF J888
 LAWSONS CHLOE Z341
 ZWT SUMMITT 6507
LAWSONS HENRIETTA PRIDE H717
 LAWSONS HENRIETTA PRIDE E264



MUSGRAVE 316 STUNNER

Consignor: **LAWSON FAMILY FARMS**

| CED | BW | WW | YW | SC | HP | MILK | | DOC | CLAW |
|-------|------|----|------|------|------|------|-----|-----|------|
| 7 | .7 | 90 | 156 | 1.18 | 13.1 | 22 | 20 | .44 | |
| ANGLE | PAP | CW | MARB | RE | FAT | \$M | \$W | \$B | \$C |
| .35 | 2.45 | 67 | .49 | .70 | .022 | 82 | 85 | 147 | 273 |

A Henrietta Pride female out of the first calf crop of Lawson's Top Shelf J888. Top 4% WW, Top 5% YW. She carries an individual WW Ratio of 106. Sells open. Dam sells at Lawson Family Farms on April 26th.

22B Lawsons Pleasant Pride M1428
 COW

DOB: 3/12/24 Tattoo: M1428 Reg# 21109591
 MUSGRAVE 316 STUNNER
T K STUNNER F655B
 T K PRINCESS Z749
 BAR R JET BLACK 5063
BRIDGEVIEW PLEASANTPRIDE1962
 BRIDGEVIEW PLEASANT PRIDE 137

22C Lawsons Henrieta Pride M1422
 COW

DOB: 2/23/24 Tattoo: M1422 Reg# 21109590
 T K STUNNER F655B
LAWSONS TOP SHELF J888
 LAWSONS CHLOE Z341
 BAR R JET BLACK 5063
LAWSONS HENRIETTA PRIDE J876
 LAWSONS HENRIETTA PRIDE F364

Consignor: **LAWSON FAMILY FARMS**

| CED | BW | WW | YW | SC | HP | MILK | | DOC | CLAW |
|-------|------|----|------|------|------|------|-----|-----|------|
| 7 | 2.6 | 91 | 157 | 2.27 | 11.6 | 25 | 16 | .54 | |
| ANGLE | PAP | CW | MARB | RE | FAT | \$M | \$W | \$B | \$C |
| .46 | 1.27 | 90 | 1.10 | .97 | .057 | 80 | 85 | 214 | 358 |

Larger framed heifer out of T K Stunner F655B out of the Pleasant Pride cow family. Top 4% WW, Top 5% YW EPDs. Top 1% SC and Top 3% \$C. Dam sells at Lawson Family Farms Sale on April 26th. Dam has 3 calves @105 WW Ratio with a calving interval 365 days. M1428 sells open.

Consignor: **LAWSON FAMILY FARMS**

| CED | BW | WW | YW | SC | HP | MILK | | DOC | CLAW |
|-------|------|-----|------|------|------|------|-----|-----|------|
| 7 | 2.5 | 107 | 187 | 2.14 | 12.0 | 33 | 26 | .69 | |
| ANGLE | PAP | CW | MARB | RE | FAT | \$M | \$W | \$B | \$C |
| .53 | 1.58 | 112 | .73 | .98 | .054 | 55 | 98 | 212 | 330 |

A nice Lawsons Top Shelf J888 female out of the very productive Henrietta Pride cow family. Has a WW EPD +107 (Top 1%), YW EPD +187 (Top 1%), Top 10% \$B, \$C, and Milk EPDs. Individual WW Ratio of 104. Sells open.



LAWSONS DONNA L1334

23A lawsons donna L1334
 COW

DOB: 10/19/23 Tattoo: L1334 Reg# 20897193
 MUSGRAVE 316 STUNNER
T K STUNNER F655B
 T K PRINCESS Z749
 S A V RENOWN 3439
LAWSONS DONNA F369
 COLEMAN DONNA 063

Consignor: **LAWSON FAMILY FARMS**

| CED | BW | WW | YW | SC | HP | MILK | | DOC | CLAW |
|-------|------|----|------|------|------|------|-----|-----|------|
| 4 | 2.9 | 80 | 138 | 1.19 | 14.1 | 24 | 17 | .51 | |
| ANGLE | PAP | CW | MARB | RE | FAT | \$M | \$W | \$B | \$C |
| .46 | 1.23 | 63 | .30 | .72 | .022 | 69 | 71 | 139 | 249 |

A nice T K Stunner F655B daughter out of the Coleman Donna cow family that will make a really nice cow. Top 15% WW, Top 20% YW EPD. Sells open, ready to breed. Dam sells at Lawson Family Farms Sale on April 26th.



S WHITLOCK 179

23B Lawsons Enchantress L1332

DOB: 10/17/23 Tattoo: L1332 Reg# 21025887

COW

SITZ STELLAR 726D
SITZ STELLAR 715G
 SITZ BARBARAMERE JET 171E
 JINDRA DOUBLE VISION
DOUBLE R BAR ENCHANTRESSB351
 DOUBLER BAR ENCHANTRESS X144

Consignor: **LAWSON FAMILY FARMS**

| CED | BW | WW | YW | SC | HP | MILK | DOC | CLAW | |
|-------|------|----|------|-----|------|------|-----|------|-----|
| 6 | 1.1 | 59 | 94 | .15 | 11.5 | 30 | 17 | .28 | |
| ANGLE | PAP | CW | MARB | RE | FAT | \$M | \$W | \$B | \$C |
| .34 | 1.14 | 38 | .80 | .32 | .067 | 71 | 64 | 120 | 227 |

Nice moderate female out of Sitz Stellar 715G and the very productive Enchantress cow family. Her dam has seven progeny with a 97 BW Ratio and a 106 WW Ratio with a calving interval of 346 days. She also carries Top 1% Claw and Top 4% Foot Angle EPDs. Her dam B531 sells in the Lawson Family Farms Sale, April 26th. L1332 sells open, ready to breed.

23C Lawsons Rita L1304

DOB: 9/3/23 Tattoo: L1304 Reg# 21025885

COW

MUSGRAVE 316 STUNNER
LAWSONS STUNNER H774
 LAWSONS CHLOE Z341
 TEX PLAYBOOK 5437
BRIDGEVIEW/S&G RITA 1809
 BRIDGEVIEW RITA 6110

Consignor: **LAWSON FAMILY FARMS**

| CED | BW | WW | YW | SC | HP | MILK | DOC | CLAW | |
|-------|------|----|------|------|------|------|-----|------|-----|
| 1 | 2.9 | 83 | 141 | 2.07 | 18.1 | 33 | 19 | .47 | |
| ANGLE | PAP | CW | MARB | RE | FAT | \$M | \$W | \$B | \$C |
| .54 | 2.58 | 66 | .18 | .43 | .067 | 78 | 81 | 130 | 247 |

A Lawsons Stunner H774 daughter out of a super TEX Playbook 5437 dam (4 calves @106 WW Ratio). Top 15% WW and YW. Sells open ready to breed.

24 Lucas Lady Southwest T3810

DOB: 10/29/23 Tattoo: 3810 Reg# 20955725

COW
M1P S WHITLOCK 179
LUCAS SOUTHWEST 7130
 LUCAS LADY BISMARCK 114J

K C F BENNETT COMMONWEALTH
LUCAS LADY COMMONWEALTH T691
 LUCAS LADY UPWARD W538 T2680

Consignor: **LUCAS FARM**

| CED | BW | WW | YW | SC | HP | MILK | DOC | CLAW | |
|-------|------|----|------|------|------|------|-----|------|-----|
| 7 | 1.0 | 76 | 134 | 1.20 | 12.6 | 27 | 25 | .54 | |
| ANGLE | PAP | CW | MARB | RE | FAT | \$M | \$W | \$B | \$C |
| .60 | -.03 | 69 | .35 | .93 | .003 | 55 | 68 | 167 | 272 |

A nice heifer sired by Lucas Southwest 7130. 3810 is deep and thick made and comes from a cow family that has produced several top selling bulls through the VA BCIA. She sells pasture exposed to Lucas Stellar 26S a true calving ease bull from 1/20-3/19.

25 Lucas Lady Supercharger M370

DOB: 10/16/23 Tattoo: 3700 Reg# 21207347

COW

S A V RECHARGE 3436
S A V SUPERCHARGER 6813
 S A V MADAME PRIDE 0075

R B TOUR OF DUTY 177
LUCAS LADY TOUR OF DUTY M560
 VT GRID MAKER B23

Consignor: **LUCAS FARM**

| CED | BW | WW | YW | SC | HP | MILK | DOC | CLAW | |
|-------|------|----|------|-----|-------|------|-----|------|-----|
| 6 | 1.4 | 51 | 93 | .74 | 10.1 | 25 | 26 | .48 | |
| ANGLE | PAP | CW | MARB | RE | FAT | \$M | \$W | \$B | \$C |
| .49 | 2.67 | 46 | .26 | .77 | -.039 | 46 | 44 | 136 | 222 |

Here is a fancy bred heifer sired by SAV Supercharger. The Supercharger females we have are standouts. Feminine type cows with perfect udders. She sells bred to Lucas Stellar 26S to calve this fall. Exposed from 1/20-3/19.



LAWSONS RITA L1304

26 Lucas Lady Exclusive 133S

DOB: 9/24/21 Tattoo: 133S Reg# 20356663

COW

LD CAPITALIST 316
MUSGRAVE 316 EXCLUSIVE
 MUSGRAVE PRIM LASSIE 163-386

K C F BENNETT TEN X C640
LUCAS LADY 10X C640 731D
 LUCAS LADY MANDATE 0550

Consignor: **LUCAS FARM**

| CED | BW | WW | YW | SC | HP | MILK | DOC | CLAW | |
|-------|------|----|------|-----|------|------|-----|------|-----|
| 7 | 1.6 | 72 | 124 | .73 | 13.1 | 32 | 16 | .47 | |
| ANGLE | PAP | CW | MARB | RE | FAT | \$M | \$W | \$B | \$C |
| .47 | 1.47 | 58 | .66 | .67 | .021 | 75 | 76 | 155 | 276 |

Just a 3 year old cow sired by Musgrave 316 Exclusive. 133S did well with her first calf that had a weaning ratio of 105. She sells with a fancy heifer calf sired by Point P Goal Keeper 1004 born 12/16/25 and pasture exposed to Point P Goal Keeper 1004 until 3/18/25. Breeding update on sale day.

27 Lucas Lady 116S

DOB: 9/13/21 Tattoo: 116S Reg# 20356644

COW

CTS REMEDY 1T01
LUCAS TONIC 654S
 LUCAS LADY PROPHET 462S

K C F BENNETT 9M25 A352
LUCAS LADY 9M25 A352 519N
 LUCAS LADY SOLUTION 92J

Consignor: **LUCAS FARM**

| CED | BW | WW | YW | SC | HP | MILK | DOC | CLAW | |
|-------|-----|----|------|-----|------|------|-----|------|-----|
| 5 | .8 | 72 | 131 | .97 | 12.6 | 35 | 17 | .54 | |
| ANGLE | PAP | CW | MARB | RE | FAT | \$M | \$W | \$B | \$C |
| .49 | .21 | 49 | .85 | .54 | .018 | 63 | 75 | 151 | 259 |

A 3 year old daughter of Lucas Tonic. The Tonic females are very nice and wean big calves with 116S being no exception. She boasts a weaning ratio of 105 on her first calf. She sells with a stout bull calf sired by Point P Goal Keeper 1004 born 2/4/25.



K C F BENNETT FORTRESS



MUSGRAVE 316 EXCLUSIVE

28 Lucas Lady DL Dually 884S

DOB: 9/24/18 Tattoo: 884S Reg# 19448394

COW

DL SONIC 444
DL DUALLY
 DL INCENTIVE 2103

G A R PROGRESS
LUCAS LADY PROGRESS 49J
 LUCAS LADY PROPHET 221F

Consignor: **LUCAS FARM**

| CED | BW | WW | YW | SC | HP | MILK | DOC | CLAW | |
|-------|------|----|------|-----|------|------|-----|------|-----|
| 9 | .8 | 74 | 129 | .55 | 10.8 | 23 | 32 | .52 | |
| ANGLE | PAP | CW | MARB | RE | FAT | \$M | \$W | \$B | \$C |
| .44 | 2.03 | 54 | 1.03 | .32 | .072 | 75 | 70 | 152 | 272 |

A nice middle-aged daughter of the popular ABS sire DL Dually. 884S has been a good consistent cow while having a calving interval of 4@371 days. She is easy fleshing and sells with a bull calf sired by Lucas Southwest born 10/31/24 and pasture exposed to Lucas Wall Street 067N observed bred on 2/2/25.

29 Lucas Lady Fortress T6140

DOB: 10/30/16 Tattoo: 6140 Reg# 18758511

COW

CONNEALY CONSENSUS
K C F BENNETT FORTRESS
 THOMAS PATRICIA 9705

H A IMAGE MAKER 0415
LUCAS LADY IMAGE MAKER T96J
 LUCAS LADY RIGHT WAY T659N

Consignor: **LUCAS FARM**

| CED | BW | WW | YW | SC | HP | MILK | DOC | CLAW | |
|-------|------|----|------|-----|-------|------|-----|------|-----|
| -6 | 3.7 | 74 | 119 | .39 | 6.1 | 31 | 8 | .51 | |
| ANGLE | PAP | CW | MARB | RE | FAT | \$M | \$W | \$B | \$C |
| .53 | 2.94 | 54 | .42 | .69 | -.035 | 42 | 71 | 148 | 234 |

This Fortress daughter is loaded with power. She has always been a favorite at Lucas Farm she is slick haired, thick made with a beautiful udder. 6140 has a WR of 6 @ 103, YR 3 @ 104, IMF 4 @ 107, RE 4 @ 103. She sells with a fancy heifer calf born 11/30/24 sired by WHS Surpass 102K (reg# 20582185) which may be one of the top growth Surpass sons in the country. 6140 has been exposed to Lucas Wall Street 067N from 1/17/25-3/17/25. Breeding update on sale day.

30A Matney Connealy Gary 408

DOB: 4/10/24 Tattoo: 408 Reg# 21116492

COW

CONNEALY GARY
CONNEALY GARY 756X
JAZZEEN OF CONANGA 4660 756X

WERNER WAR PARTY 2417
MATNEY WAR PARTY 1692
MATNEY LIME LIGHT 1370

Consignor: MATNEY ANGUS FARM

| CED | BW | WW | YW | SC | HP | MILK | DOC | CLAW | |
|-------|-----|----|------|------|-------|------|-----|------|-----|
| 7 | 1.3 | 77 | 137 | 1.40 | 10.6 | 28 | 16 | .51 | |
| ANGLE | PAP | CW | MARB | RE | FAT | \$M | \$W | \$B | \$C |
| .44 | .78 | 72 | 1.03 | 1.00 | -.003 | 54 | 74 | 191 | 302 |

Nice set of open heifers from Matney Angus Farm. 408 is sired by Connealy Gary 756X and is out of a dam sired by the Pathfinder bull, Werner War Party 2417. Sells open.

30B Matney Gary 756X-4267

DOB: 3/20/24 Tattoo: 4267 Reg# 21142592

COW

CONNEALY GARY
CONNEALY GARY 756X
JAZZEEN OF CONANGA 4660 756X

GAR DAYLIGHT H 3076
MATNEY DAYLIGHT 1978
MATNEY PRIDE 0898

Consignor: MATNEY ANGUS FARM

| CED | BW | WW | YW | SC | HP | MILK | DOC | CLAW | |
|-------|------|----|------|------|------|------|-----|------|-----|
| 7 | 2.7 | 67 | 115 | .92 | 7.4 | 39 | 13 | .44 | |
| ANGLE | PAP | CW | MARB | RE | FAT | \$M | \$W | \$B | \$C |
| .48 | 2.11 | 59 | 1.15 | 1.00 | .017 | 70 | 76 | 176 | 298 |

Another open heifer from Matney Angus Farm out of Cedar Bluff, VA. 4267 is sired by Connealy Gary 756X and is out of a dam sired by GAR Daylight H 3076. She will make a great addition to any herd as she shows several Pathfinders in her pedigree. Sells open.

30C Matney Connealy Unique-4250

DOB: 3/15/24 Tattoo: 4250 Reg# 20971544

COW

DEER VALLEY UNIQUE 5635
CONNEALY UNIQUE 020
ELFA OF CONANGA 020

CONNEALY BLACKHAWK 6198
MATNEY BLACKHAWK 2188
MATNEY SUNRISE 1737

Consignor: MATNEY ANGUS FARM

| CED | BW | WW | YW | SC | HP | MILK | DOC | CLAW | |
|-------|-----|----|------|------|-------|------|-----|------|-----|
| 3 | 3.5 | 93 | 148 | 1.56 | 9.8 | 18 | 17 | .48 | |
| ANGLE | PAP | CW | MARB | RE | FAT | \$M | \$W | \$B | \$C |
| .38 | .97 | 57 | .69 | .87 | -.013 | 59 | 75 | 146 | 248 |

Another nice open heifer here. 4250 is the granddaughter of the Pathfinder bull, Deer Valley Unique 5635 and is out of a dam from the Blackhawk cow family from Matney Angus Farm. Her WW is in the Top 3% and her YW is in the Top 10% of the breed. Sells open.

31A Matney Connealy Unique 4251

DOB: 3/15/24 Tattoo: 4251 Reg# 20971545

COW

DEER VALLEY UNIQUE 5635
CONNEALY UNIQUE 020
ELFA OF CONANGA 020

MATNEY NIAGARA 1816
MATNEY NIAGARA 1816-2131
MATNEY TOUR OF DUTY 1635

Consignor: MATNEY ANGUS/JUSTIN MATNEY

| CED | BW | WW | YW | SC | HP | MILK | DOC | CLAW | |
|-------|------|----|------|-----|------|------|-----|------|-----|
| 10 | .3 | 83 | 133 | .26 | 12.0 | 26 | 27 | .67 | |
| ANGLE | PAP | CW | MARB | RE | FAT | \$M | \$W | \$B | \$C |
| .53 | 2.81 | 62 | .37 | .88 | .010 | 69 | 85 | 138 | 248 |

Another nice group of open heifers here. This Deer Valley Unique granddaughter is out of a dam who descends from the very popular S S Niagara Z29 and R B Tour of Duty 177 who are both Pathfinder bulls. Her \$W+84 is in the Top 5% of the Angus breed. Sells open.

31B Matney Connealy Tahoe-4222

DOB: 3/4/24 Tattoo: 4222 Reg# 20971534

COW

TEHAMA TAHOE B767
CONNEALY TAHOE 836N
BOKA RANA OF CONANGA 836N

CRAWFORD GUARANTEE 9137
MATNEY GUARANTEE-2287
MATNEY SUNRISE 7124

Consignor: MATNEY ANGUS/JUSTIN MATNEY

| CED | BW | WW | YW | SC | HP | MILK | DOC | CLAW | |
|-------|------|----|------|-----|------|------|-----|------|-----|
| 12 | -.3 | 78 | 139 | .23 | 15.0 | 36 | 25 | .57 | |
| ANGLE | PAP | CW | MARB | RE | FAT | \$M | \$W | \$B | \$C |
| .50 | 1.26 | 61 | .73 | .47 | .047 | 80 | 88 | 146 | 269 |

Nice EPDs on this open heifer consigned by Justin Matney of Matney Angus Farm. 4222 is sired by Connealy Tahoe 836N. Her Milk EPD +36 is in the Top 4% and her \$W +88 is in the Top 2% of the Angus breed. She will make a nice addition to any herd. Sells open.

31C JET Surpass 2473

DOB: 2/23/24 Tattoo: 2473 Reg# 20971550

COW

TEX PLAYBOOK 5437
BJ SURPASS
BJ PROPHET 5275

DEER VALLEY ALL IN
DV ALL IN BLACK
DEER VALLEY BLACKCAP 26102

Consignor: MATNEY ANGUS/JET FARMS

| CED | BW | WW | YW | SC | HP | MILK | DOC | CLAW | |
|-------|------|----|------|------|-------|------|-----|------|-----|
| 7 | .7 | 71 | 112 | -.20 | 10.1 | 22 | 17 | .53 | |
| ANGLE | PAP | CW | MARB | RE | FAT | \$M | \$W | \$B | \$C |
| .47 | 2.09 | 36 | .43 | .82 | -.013 | 75 | 73 | 119 | 229 |

Nice open heifer from Matney Angus/JET Farms included in this group. 2473's pedigree is filled with Pathfinder bulls on the top and bottom. Sells open.

32A JET Forever TW 2436

DOB: 2/16/24 Tattoo: 2436 Reg# 20971551

COW

E W A PEYTON 642

E W A TEAMWORK 821

E W A 543 OF 117 WEIGH UP

CONNELY BLACKHAWK 6198

TE FOREVER BLACKHAWK 2028

MATNEY NIAGARA 1822

MATNEY ANGUS/JET FARMS

Consignor:

| CED | BW | WW | YW | SC | HP | MILK | DOC | CLAW | |
|-------|------|-----|------|-----|------|------|-----|------|-----|
| -4 | 4.8 | 103 | 172 | .45 | 11.8 | 20 | 21 | .57 | |
| ANGLE | PAP | CW | MARB | RE | FAT | \$M | \$W | \$B | \$C |
| .46 | 3.12 | 80 | .54 | .98 | .033 | 42 | 73 | 164 | 255 |

The first of a set of three open heifers from JET Farms/Taylor Estep. These females will make a great addition to any herd. 2436 is sired by E W A Teamwork 821, the E W A Peyton 642 son and her dam is sired by the popular Connealy Blackhawk 6198. Her WW and YW are on the Top 1% of the Angus breed. Sells open.

32B JET Tahoe 2411

DOB: 2/11/24 Tattoo: 2411 Reg# 21010497

COW

TEHAMA UPWARD Y238

TEHAMA TAHOE B767

TEHAMA MARY BLACKBIRD Y684

DEER VALLEY GROWTH FUND

JET GROWTH FUND 2237

TE NIAGARA 2068

MATNEY ANGUS/JET FARMS

Consignor:

| CED | BW | WW | YW | SC | HP | MILK | DOC | CLAW | |
|-------|------|----|------|------|------|------|-----|------|-----|
| 11 | 0 | 87 | 148 | 1.32 | 16.3 | 33 | 27 | .41 | |
| ANGLE | PAP | CW | MARB | RE | FAT | \$M | \$W | \$B | \$C |
| .41 | 3.58 | 66 | .84 | .59 | .037 | 95 | 95 | 168 | 313 |

This nice open heifer is sired by the very popular Tehama Tahoe B767 out of a dam sired by the great Deer Valley Growth Fund. JET Tahoe 2411's WW, YW and M EPDs are in the Top 10% while her \$W is in the Top 1% of the Angus breed. Sells open.

32C JET Apex 2412

DOB: 2/11/24 Tattoo: 2412 Reg# 20975098

COW

G A R DUAL THREAT

G A R APEX

G A R ASHLAND N779

TEHAMA TAHOE B767

TE TEHAMA TAHOE 2239

MATNEY NIAGARA 1822

MATNEY ANGUS/JET FARMS

Consignor:

| CED | BW | WW | YW | SC | HP | MILK | DOC | CLAW | |
|-------|------|----|------|------|------|------|-----|------|-----|
| 18 | -1.8 | 79 | 134 | 1.22 | 19.6 | 28 | 29 | .51 | |
| ANGLE | PAP | CW | MARB | RE | FAT | \$M | \$W | \$B | \$C |
| .55 | 1.39 | 58 | .79 | .99 | .006 | 98 | 86 | 164 | 311 |

Outstanding EPDs on this open heifer consigned by Taylor Estep. 2412's CED+18 and CEM+16 are in the Top 1%, \$M+96 Top2%, \$W+87 Top 3% and BW-1.7 Top 5%. Her pedigree is full of Pathfinder bulls. She will make a great addition to any herd. Sells open.



E W A PEYTON 642

33 Matney Tahoe 836N-2360

DOB: 3/6/23 Tattoo: 2360 Reg# 20671788

COW

TEHAMA TAHOE B767

CONNELY TAHOE 836N

BOKA RANA OF CONANGA 836N

S S NIAGARA Z29

MATNEY NIAGARA Z29-2164

MATNEY DAYLIGHT 1760

MATNEY ANGUS FARM

Consignor:

| CED | BW | WW | YW | SC | HP | MILK | DOC | CLAW | |
|-------|------|----|------|-----|------|------|-----|------|-----|
| 13 | -1.9 | 59 | 116 | .42 | 12.2 | 40 | 13 | .56 | |
| ANGLE | PAP | CW | MARB | RE | FAT | \$M | \$W | \$B | \$C |
| .47 | 1.98 | 54 | .52 | .76 | .064 | 66 | 72 | 141 | 249 |

Sells with heifer calf born 2/28/25 (BW 65 lbs) sired by Connealy Commerce whose EPDs are CED+14 BW+1.4 WW+87 (Top 10%) YW+151 (Top 10%) M+22 \$M+70 \$W+76 (Top 15%) \$B+167 \$C+287. 2360 sells open.



TEHAMA TAHOE B767

34 Matney Tahoe 836N-2366
 COW DOB: 3/4/23 Tattoo: 2366 Reg# 20671794

TEHAMA TAHOE B767
CONNEALY TAHOE 836N
 BOKA RANA OF CONANGA 836N
 G A R SUNRISE 2153G
MATNEY SUNRISE F0201
 MATNEY DAYLIGHT 1553

MATNEY ANGUS/JUSTIN MATNEY

| CED | BW | WW | YW | SC | HP | MILK | DOC | CLAW | |
|-------|-----|----|------|------|------|------|-----|------|-----|
| 10 | .8 | 71 | 126 | 1.05 | 15.0 | 25 | 21 | .57 | |
| ANGLE | PAP | CW | MARB | RE | FAT | \$M | \$W | \$B | \$C |
| .42 | .23 | 57 | .86 | .41 | .047 | 77 | 70 | 158 | 282 |

Sells with heifer calf born 2/22/25 (BW 60 lbs) sired by Connealy Restore 178C whose EPDs are +12 -1.4 +72 +128 +38 \$M+104 (Top 1%) \$W+87 (Top 3%) \$B+163 \$C+315 (Top 10%). 2366 sells open.

35 JET Tahoe 2325
 COW DOB: 2/21/23 Tattoo: 2325 Reg# 20977856

TEHAMA UPWARD Y238
TEHAMA TAHOE B767
 TEHAMA MARY BLACKBIRD Y684
 S S NIAGARA Z29
TE NIAGARA 2068
 MATNEY SUNRISE 1726

MATNEY ANGUS/JET FARM

| CED | BW | WW | YW | SC | HP | MILK | DOC | CLAW | |
|-------|-----|----|------|-----|------|------|-----|------|-----|
| 5 | 1.2 | 83 | 144 | .98 | 16.5 | 24 | 24 | .50 | |
| ANGLE | PAP | CW | MARB | RE | FAT | \$M | \$W | \$B | \$C |
| .54 | .26 | 63 | .75 | .69 | .035 | 72 | 77 | 157 | 276 |

Sells with heifer calf born 3/15/25 (BW 61 lbs) sired by Connealy Surpass 867I whose EPDs are +9 +.1 +68 +111 +28 \$M+121 (Top 1%) \$W+79 (Top 10%) \$B+138 \$C+300. 2325 sells open.



G A R PROPHET

36AMVAF Rita 4008
 COW DOB: 4/22/24 Tattoo: 4008 Reg# 20946365

MILL BRAE IDENTIFIED 4031
HPCA VERACIOUS
 H P C A SUNRISE A246
 DE-SU B148
MVAF RITA 2020
 PV RITA 9637

MOUNTAIN VIEW ANGUS FARM

| CED | BW | WW | YW | SC | HP | MILK | DOC | CLAW | |
|-------|-----|----|------|-----|------|------|-----|------|-----|
| 6 | 2.7 | 82 | 147 | .78 | 11.2 | 35 | 21 | .48 | |
| ANGLE | PAP | CW | MARB | RE | FAT | \$M | \$W | \$B | \$C |
| .41 | .54 | 81 | 1.36 | .94 | .091 | 75 | 82 | 210 | 347 |

A nice stout heifer out of HPCA Veracious whose daughters have been in high demand across the country. These progeny are consistent and trouble free cattle. 4008 has 14 EPDs in the top 15% of the breed including WW, YW, Milk, CW, Marb, \$W, \$B, and \$C. Sells open.

36BMVAF Susie 4006
 COW DOB: 2/26/24 Tattoo: 4006 Reg# 20904782

CONNEALY CLARITY
POSS WINCHESTER
 POSS BLUEBLOOD 6502
 G A R HOME TOWN
MVAF SUSIE 2112
 LHR SUSIE 0802-5570

MOUNTAIN VIEW ANGUS FARM

| CED | BW | WW | YW | SC | HP | MILK | DOC | CLAW | |
|-------|------|----|------|------|------|------|-----|------|-----|
| 9 | 1.6 | 86 | 159 | .17 | 12.2 | 25 | 15 | .46 | |
| ANGLE | PAP | CW | MARB | RE | FAT | \$M | \$W | \$B | \$C |
| .41 | 1.15 | 78 | 1.02 | 1.32 | .016 | 50 | 73 | 210 | 322 |

A very nice yearling heifer by the ST Genetics sire Poss Winchester out of a GAR Home Town daughter. 4006 ranks in the top 10% of the breed for WW, YW, RADG, CW, RE, \$F, \$G, \$B, and \$C. She also brings that elusive +1 and +1 combination of Marbling and Ribeye EPDs to the auction. Sells open and ready to breed to the bull of your choice.

36CMVAF Southern Belle 4005
 COW DOB: 2/14/24 Tattoo: 4005 Reg# 20892095

G A R PROPHET K263
BEAL BREAKTHROUGH
 H P C A SURE FIRE S6
 CONNEALY IRISH 0204
LYN LEW ERICA L24
 LYN LEW ERICA 30L

MOUNTAIN VIEW ANGUS FARM

| CED | BW | WW | YW | SC | HP | MILK | DOC | CLAW | |
|-------|-------|----|------|-----|------|------|-----|------|-----|
| 15 | -.3 | 77 | 138 | .77 | 11.1 | 22 | 23 | .49 | |
| ANGLE | PAP | CW | MARB | RE | FAT | \$M | \$W | \$B | \$C |
| .34 | -1.53 | 54 | 2.00 | .96 | .060 | 79 | 75 | 211 | 353 |

A yearling daughter out of the very popular ST Genetics sire Beal Breakthrough. Her dam is a direct daughter of the Pathfinder bull Connealy Irish 0204. 4005 has extreme calving ease combined with performance and growth. Check out her +2.00 Marbling EPD. Sells open and ready to breed to the bull of your choice.

37 MVAF Erianna 3022

DOB: 8/31/23 Tattoo: 3022 Reg# 20728813

COW

CONNEALY CLARITY
POSS WINCHESTER
POSS BLUEBLOOD 6502

E W A PEYTON 642

MVAF ERIANNA 9120
QUAKER HILL ERIANNA 8T2

MOUNTAIN VIEW ANGUS FARM

Consignor:

| CED | BW | WW | YW | SC | HP | MILK | DOC | CLAW | |
|-------|-----|----|------|------|------|------|-----|------|-----|
| 8 | 1.9 | 94 | 162 | 1.19 | 12.1 | 30 | 24 | .55 | |
| ANGLE | PAP | CW | MARB | RE | FAT | \$M | \$W | \$B | \$C |
| .45 | .43 | 87 | 1.69 | .57 | .084 | 51 | 85 | 232 | 352 |

The first of a set of flush sisters by Poss Winchester out of our foundation donor MVAF Erianna 9120. She not only has that front pasture look, but also boasts an impressive set of EPDs with twelve ranking in the top 5% of the breed including WW, YW, CW, Marb, \$W, \$F, \$G, \$B, and \$C. 3022 sells AI bred to the Select Sires bull GAR Powercat (reg#20665222) whose EPDs include CED +12, BW +0, WW +79, YW +153, Marb +1.67, \$B +250, and \$C +384. Pregnancy confirmed via ultrasound with calf due 9/1/25.

38 MVAF Erianna 3017

DOB: 8/6/23 Tattoo: 3017 Reg# 20728810

COW

CONNEALY CLARITY
POSS WINCHESTER
POSS BLUEBLOOD 6502

E W A PEYTON 642

MVAF ERIANNA 9120
QUAKER HILL ERIANNA 8T2

MOUNTAIN VIEW ANGUS FARM

Consignor:

| CED | BW | WW | YW | SC | HP | MILK | DOC | CLAW | |
|-------|------|----|------|------|------|------|-----|------|-----|
| 10 | .7 | 84 | 151 | 1.04 | 11.7 | 33 | 24 | .47 | |
| ANGLE | PAP | CW | MARB | RE | FAT | \$M | \$W | \$B | \$C |
| .50 | 1.47 | 71 | 1.29 | 1.09 | .040 | 64 | 85 | 201 | 325 |

The second of a set of flush sisters by Poss Winchester out of our foundation donor MVAF Erianna 9120. This beautiful heifer has several EPDs in the top 15% including WW, YW, Milk, Marb, RE, \$W, and \$B. 3017 sells AI bred to the Select Sires bull GAR Powercat (reg.# 20665222) whose EPDs are CED +12, BW +0, WW +79, YW +153, Marb +1.67, \$B +250, and \$C +384. Pregnancy confirmed via ultrasound with calf due 9/1/25.



SYDGEN ENHANCE



POSS WINCHESTER

39 Ogle Lady Ida 33X

DOB: 1/11/24 Tattoo: 38X Reg# 20930930

COW

G A R TRANSCENDENT
WILLIAMS TRANSCENDENT 12-315
WILLIAMS P ERICA 700-435

G A R SET APART
FULCHER LADY IDA 0159
W C A LADY IDA 3290

OGLE FARM/DAVID OGLE

Consignor:

| CED | BW | WW | YW | SC | HP | MILK | DOC | CLAW | |
|-------|------|----|------|-----|-------|------|-----|------|-----|
| 2 | 4.6 | 91 | 161 | .44 | 10.9 | 30 | 22 | .47 | |
| ANGLE | PAP | CW | MARB | RE | FAT | \$M | \$W | \$B | \$C |
| .39 | 1.19 | 69 | 1.35 | .89 | -.009 | 68 | 73 | 210 | 341 |

Nice bred heifer daughter of Williams Transcendent. She has eight EPDs in the Top 10% of the breed. Pasture exposed from 1/1/25 to 3/10/25. Preg checked, safe in calf on 3/12/25 to Ogle Fireball 19X whose EPDs are +8 +.8 +70 +128 \$B+232 \$C+347.

40 Ogle Pride 31X

DOB: 12/21/23 Tattoo: 31X Reg# 20930929

COW

SYDGEN ENHANCE
SFA EG80 ENHANCE OF AX47
SFA RITA AX47

V A R DISCOVERY 2240
GB-DISCOVERY PRIDE-G3D
SFA PRIDE AX37

OGLE FARM/DAVID OGLE

Consignor:

| CED | BW | WW | YW | SC | HP | MILK | DOC | CLAW | |
|-------|------|----|------|-----|-------|------|-----|------|-----|
| 12 | -1.4 | 61 | 115 | .87 | 10.0 | 26 | 16 | .46 | |
| ANGLE | PAP | CW | MARB | RE | FAT | \$M | \$W | \$B | \$C |
| .53 | 4.29 | 48 | .81 | .48 | -.003 | 48 | 57 | 158 | 253 |

A bred heifer and granddaughter of SydGen Enhance. Pasture exposed from 1/1/25 to 3/10/25. Preg checked, safe in calf on 3/12/25 to Ogle Fireball 19X whose EPDs are +8 +.8 +70 +128 \$B+232 \$C+347.

41A DS Anglena Blackbird 105 94

DOB: 6/25/24 Tattoo: 094 Reg# 21202317

COW

K C F BENNETT SOUTHSIDE
KING OF THE SOUTH 100
SG ANGLN BLACKBIRD 011

QUAKER HILL RAMPAGE 0A36
D S ANGELENA BLACKBIRD 105
D S ANGELEN BLACKBIRD 059



K C F BENNETT SOUTHSIDE

Consignor: **SENSABAUGH ANGUS**

| CED | BW | WW | YW | SC | HP | MILK | | DOC | CLAW |
|-------|------|----|------|-----|-------|------|-----|-----|------|
| 4 | 3.0 | 80 | 138 | .86 | 12.8 | 31 | | 16 | .52 |
| ANGLE | PAP | CW | MARB | RE | FAT | \$M | \$W | \$B | \$C |
| .49 | 3.07 | 61 | .72 | .65 | -.012 | 52 | 72 | 164 | 265 |

A nice open heifer sired by King of the South 100 who is a son of the Pathfinder bull, K C F Bennett Southside. Her dam was sired by the great Quaker Hill Rampage 0A36 and is from the Angelen Blackbird cow family. Sells open ready to breed to the bull of your choice.

41B SG Anglena Blackbird 089 064

DOB: 4/23/24 Tattoo: 064 Reg# 21202491

COW

K C F BENNETT SOUTHSIDE
KING OF THE SOUTH 100
SG ANGLN BLACKBIRD 011

JINDRA DOUBLE VISION
SG ANGLENA BLACKBIRD 089
SG ANGLN BLACKBIRD 011

42 COW

DOB: 6/1/22 Tattoo: 032 Reg# 20611162

CONNEALY BLACKHAWK 6198
SG BLACKHAWK 027 040
SG CHLOE BLACKBIRD 027

JINDRA ACCLAIM
SG ABBY EVERGREEN 096 068
SG ABBY EVERGREEN 096

Consignor: **SENSABAUGH ANGUS**

| CED | BW | WW | YW | SC | HP | MILK | | DOC | CLAW |
|-------|-----|----|------|-----|-----|------|-----|-----|------|
| 0 | 3.6 | 73 | 129 | .59 | | 30 | | | |
| ANGLE | PAP | CW | MARB | RE | FAT | \$M | \$W | \$B | \$C |
| | | | | | | 48 | 60 | | |

Another nice open heifer out of a dam sired by the Pathfinder bull, Jindra Double Vision and sired by the Southside herd bull from Doug Sensabaugh of Mt. Carmel, TN. Doug has worked with the Angus breed for over sixty years when he started working on the Allendale Farm and these cattle have exceptional pedigrees dating all the way back to the beginning. Sells open.

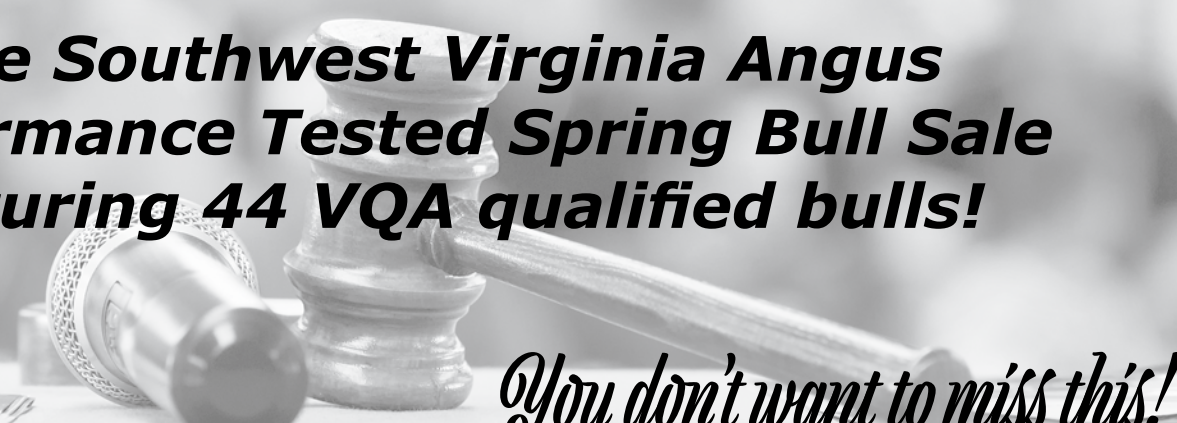
Consignor: **SENSABAUGH ANGUS**

| CED | BW | WW | YW | SC | HP | MILK | | DOC | CLAW |
|-------|-----|----|------|----|-----|------|-----|-----|------|
| 4 | 2.6 | 75 | 137 | | | 29 | | | |
| ANGLE | PAP | CW | MARB | RE | FAT | \$M | \$W | \$B | \$C |
| | | | | | | 53 | 60 | | |

032 is bred to the calving ease bull K C F Bennett Culmination (AAA 19749024) whose EPDs are +12 -.7 +74 +140 .49 \$B+228 (Top 2%) \$C +376 (Top 1%). She's out of a Jindra Acclaim cow and our Blackhawk herd bull. She's due 6/9/25. If she doesn't calf then she will have a calf due from our current DS Enhance 049 042 herd bull (AAA 20718215).

Next up...

**The Southwest Virginia Angus
Performance Tested Spring Bull Sale
featuring 44 VQA qualified bulls!**



You don't want to miss this!



WOODHILL BLUEPRINT

53 CK Myers Fair Square 004x
 DOB: 3/6/24 Tattoo: 4004X Reg# 21010748
VQA BULL

WOODHILL BLUEPRINT

MYERS FAIR-N-SQUARE M39

MYERS MISS BEAUTY M136

PLATTEMERE WEIGH UP K360

DEER VALLEY RITA 91115

DEER VALLEY RITA 5246

| | Performance Weight | Ratio |
|-----|--------------------|-------|
| BW | 77 | 100 |
| WW | 566 | 103 |
| ADG | 4.77 | 115 |
| YW | 1068 | 90 |

| CED | BW | WW | YW | SC | HP | MILK | DOC | CLAW | |
|-------|------|----|------|-----|-------|------|-----|------|-----|
| 6 | 1.7 | 80 | 141 | .72 | 11.2 | 30 | 18 | .57 | |
| ANGLE | PAP | CW | MARB | RE | FAT | \$M | \$W | \$B | \$C |
| .41 | 2.10 | 61 | .95 | .72 | -.030 | 62 | 73 | 176 | 290 |

Consignor: **CK TANGUB ANGUS**

51 BF Wildcat 438
 DOB: 2/17/24 Tattoo: 438 Reg# 21065190
VQA BULL M1P

GAR DISCOVERY 6737H

E & B WILDCAT 9402

E&B LADY PLUS 643

MUSGRAVE 316 STUNNER

BF STUNNER 101

BF FORTRESS 908

| | Performance Weight | Ratio |
|-----|--------------------|-------|
| BW | 85 | 114 |
| WW | 751 | 110 |
| ADG | 4.79 | 115 |
| YW | 1320 | 111 |

| CED | BW | WW | YW | SC | HP | MILK | DOC | CLAW | |
|-------|-----|----|------|-----|------|------|-----|------|-----|
| 6 | 2.5 | 85 | 147 | | | 26 | | | |
| ANGLE | PAP | CW | MARB | RE | FAT | \$M | \$W | \$B | \$C |
| | | 70 | 1.05 | .86 | .025 | 78 | 68 | 188 | 322 |

Consignor: **BULLOCK FARM**

54 CK Myers Fair Square 003x
 DOB: 3/6/24 Tattoo: 4003X Reg# 21010751
VQA BULL

WOODHILL BLUEPRINT

MYERS FAIR-N-SQUARE M39

MYERS MISS BEAUTY M136

PLATTEMERE WEIGH UP K360

DEER VALLEY RITA 91115

DEER VALLEY RITA 5246

| | Performance Weight | Ratio |
|-----|--------------------|-------|
| BW | 74 | 100 |
| WW | 600 | 109 |
| ADG | 5.02 | 121 |
| YW | 1089 | 92 |

| CED | BW | WW | YW | SC | HP | MILK | DOC | CLAW | |
|-------|------|----|------|-----|-------|------|-----|------|-----|
| 6 | 1.8 | 83 | 144 | .72 | 11.2 | 30 | 18 | .57 | |
| ANGLE | PAP | CW | MARB | RE | FAT | \$M | \$W | \$B | \$C |
| .41 | 2.10 | 65 | .89 | .62 | -.024 | 62 | 76 | 173 | 286 |

Consignor: **CK TANGUB ANGUS**

52 BF Wildcat 435
 DOB: 2/6/24 Tattoo: 435 Reg# 21065191
VQA BULL M1P

GAR DISCOVERY 6737H

E & B WILDCAT 9402

E&B LADY PLUS 643

A A R TEN X 7008 S A

BF TEN X 744

BF FULL POWER 530

| | Performance Weight | Ratio |
|-----|--------------------|-------|
| BW | 69 | 90 |
| WW | 643 | 95 |
| ADG | 3.73 | 90 |
| YW | 1170 | 99 |

| CED | BW | WW | YW | SC | HP | MILK | DOC | CLAW | |
|-------|------|----|------|-----|------|------|-----|------|-----|
| 14 | -1.2 | 65 | 118 | | | 22 | | | |
| ANGLE | PAP | CW | MARB | RE | FAT | \$M | \$W | \$B | \$C |
| | | 48 | 1.25 | .59 | .027 | 77 | 55 | 176 | 305 |

Consignor: **BULLOCK FARM**



E & B WILDCAT 9402

55 Gragg Threshold 487G

DOB: 3/6/24 Tattoo: 487G Reg# 21126415

VQA
BULL

MUSGRAVE 316 EXCLUSIVE

SITZ THRESHOLD 9901

SITZ EISA EVERGREEN 2838

S A V NORTH FACE 9140

MOHNEN JILT 3352

MOHNEN JILT 805

| | Performance Weight | Ratio |
|-----|--------------------|-------|
| BW | 75 | 105 |
| WW | 599 | 103 |
| ADG | 4.34 | 104 |
| YW | 1101 | 93 |

| CED | BW | WW | YW | SC | HP | MILK | DOC | CLAW | |
|-------|-------|----|------|------|------|------|-----|------|-----|
| 12 | -.5 | 75 | 127 | 2.09 | 11.1 | 21 | 16 | .47 | |
| ANGLE | PAP | CW | MARB | RE | FAT | \$M | \$W | \$B | \$C |
| .53 | -1.34 | 52 | .42 | .65 | .061 | 63 | 72 | 127 | 228 |

Consignor: **GRAGG FARMS**



MUSGRAVE 316 EXCLUSIVE

56 Gragg Threshold 480G

DOB: 3/4/24 Tattoo: 480G Reg# 21126403

VQA
BULL

MUSGRAVE 316 EXCLUSIVE

SITZ THRESHOLD 9901

SITZ EISA EVERGREEN 2838

S A V BLOODLINE 9578

GRAGG EVERELDA ENTENSE 2036

GRAGG EVERELDA ENTENSE 8019

| | Performance Weight | Ratio |
|-----|--------------------|-------|
| BW | 78 | 109 |
| WW | 645 | 111 |
| ADG | 4.93 | 119 |
| YW | 1237 | 104 |

| CED | BW | WW | YW | SC | HP | MILK | DOC | CLAW | |
|-------|------|----|------|------|------|------|-----|------|-----|
| -4 | 3.0 | 99 | 177 | 1.44 | 18.1 | 29 | 29 | .31 | |
| ANGLE | PAP | CW | MARB | RE | FAT | \$M | \$W | \$B | \$C |
| .41 | 1.93 | 74 | .97 | .73 | .024 | 75 | 84 | 172 | 298 |

Consignor: **GRAGG FARMS**

57 Gragg Scale House 449G

DOB: 2/19/24 Tattoo: 449G Reg# 21126671

VQA
BULL

MARCYS SCALE CRUSHER

S A V SCALE HOUSE 0845

S A V BLACKCAP MAY 1416

KMK ALLIANCE 6595 I87

GRAGG BARBARAMERE JET 0037

GF BARBARAMERE JET X015

| | Performance Weight | Ratio |
|-----|--------------------|-------|
| BW | 87 | 106 |
| WW | 631 | 99 |
| ADG | 3.77 | 91 |
| YW | 1091 | 92 |

| CED | BW | WW | YW | SC | HP | MILK | DOC | CLAW | |
|-------|------|----|------|------|------|------|-----|------|-----|
| -1 | 2.9 | 71 | 121 | 1.63 | 10.9 | 24 | 14 | .40 | |
| ANGLE | PAP | CW | MARB | RE | FAT | \$M | \$W | \$B | \$C |
| .50 | 2.02 | 63 | .34 | .41 | .033 | 59 | 62 | 147 | 250 |

Consignor: **GRAGG FARMS**



SITZ STELLAR 726D

58 Gragg Galactic 433G

DOB: 2/16/24 Tattoo: 433G Reg# 21126983

VQA
BULL

SITZ STELLAR 726D

SITZ GALACTIC 723G

SITZ BARBARAMERE JET 328E

ELLINGSON HOMESTEAD 6030

GRAGG EMMA 9009

GRAGG EMMA 7057

| | Performance Weight | Ratio |
|-----|--------------------|-------|
| BW | 86 | 104 |
| WW | 669 | 105 |
| ADG | 4.04 | 97 |
| YW | 1173 | 99 |

| CED | BW | WW | YW | SC | HP | MILK | DOC | CLAW | |
|-------|------|----|------|-----|------|------|-----|------|-----|
| 11 | .3 | 73 | 128 | .80 | 13.0 | 26 | 5 | .37 | |
| ANGLE | PAP | CW | MARB | RE | FAT | \$M | \$W | \$B | \$C |
| .44 | -.99 | 53 | .52 | .60 | .039 | 67 | 71 | 135 | 242 |

Consignor: **GRAGG FARMS**



G V F CALIBER

61 KAF Caliber 403

DOB: 2/20/24 Tattoo: 403 Reg# 21210753

VQA
BULL

WOODHILL BLUEPRINT

G V F CALIBER

G V F RUBY 5094

V A R DISCOVERY 2240

POWELL BLACKCAP 6303

QUAKER HILL BLACKCAP 0A31

| Performance | |
|-------------|----------|
| Weight | Ratio |
| BW | 71 106 |
| WW | 658 97 |
| ADG | 4.54 109 |
| YW | 1165 98 |

| CED | BW | WW | YW | SC | HP | MILK | DOC | CLAW | |
|-------|------|----|------|-----|-------|------|-----|------|-----|
| 4 | 2.4 | 72 | 123 | .99 | 14.8 | 28 | 20 | .58 | |
| ANGLE | PAP | CW | MARB | RE | FAT | \$M | \$W | \$B | \$C |
| .48 | 1.91 | 54 | .42 | .81 | -.029 | 66 | 64 | 140 | 248 |

Consignor: **KING ANGUS FARM**

59 Gragg Galactic 425G

DOB: 2/15/24 Tattoo: 425G Reg# 21126984

VQA
BULL

SITZ STELLAR 726D

SITZ GALACTIC 723G

SITZ BARBARAMERE JET 328E

S A V RAINDANCE 6848

GRAGG ELSIEMERE 9020

GRAGG ELSIEMERE 3014

| Performance | |
|-------------|---------|
| Weight | Ratio |
| BW | 85 102 |
| WW | 649 102 |
| ADG | 3.95 95 |
| YW | 1164 98 |

| CED | BW | WW | YW | SC | HP | MILK | DOC | CLAW | |
|-------|------|----|------|------|-------|------|-----|------|-----|
| 9 | .5 | 71 | 124 | 1.13 | 14.5 | 24 | 9 | .49 | |
| ANGLE | PAP | CW | MARB | RE | FAT | \$M | \$W | \$B | \$C |
| .52 | 1.23 | 49 | .34 | .67 | -.030 | 53 | 65 | 124 | 214 |

Consignor: **GRAGG FARMS**

62 KAF Endurance 401

DOB: 2/15/24 Tattoo: 401 Reg# 21210752

VQA
BULL

WOODHILL RELEVANCE

WOODHILL ENDURANCE

WOODHILL LASS B19-E83

S INTENT 8578

S LASS 1759

S LASS 5539

| Performance | |
|-------------|----------|
| Weight | Ratio |
| BW | 60 94 |
| WW | 700 103 |
| ADG | 4.16 100 |
| YW | 1069 90 |

| CED | BW | WW | YW | SC | HP | MILK | DOC | CLAW | |
|-------|------|----|------|-----|------|------|-----|------|-----|
| 9 | -.3 | 68 | 116 | .31 | 14.0 | 29 | 21 | .44 | |
| ANGLE | PAP | CW | MARB | RE | FAT | \$M | \$W | \$B | \$C |
| .47 | 2.42 | 53 | .99 | .63 | .060 | 88 | 70 | 156 | 290 |

Consignor: **KING ANGUS FARM**

60 Gragg Galactic 421G

DOB: 2/14/24 Tattoo: 421G Reg# 21126982

VQA
BULL

SITZ STELLAR 726D

SITZ GALACTIC 723G

SITZ BARBARAMERE JET 328E

S A V RAINDANCE 6848

GRAGG CLOVA PRIDE 9007

GRAGG CLOVA PRIDE 6017

| Performance | |
|-------------|----------|
| Weight | Ratio |
| BW | 82 99 |
| WW | 667 105 |
| ADG | 5.13 123 |
| YW | 1243 105 |

| CED | BW | WW | YW | SC | HP | MILK | DOC | CLAW | |
|-------|------|----|------|-----|------|------|-----|------|-----|
| 7 | 1.8 | 79 | 133 | .80 | 12.7 | 26 | 10 | .43 | |
| ANGLE | PAP | CW | MARB | RE | FAT | \$M | \$W | \$B | \$C |
| .43 | -.67 | 73 | .08 | .80 | .015 | 56 | 73 | 137 | 234 |

Consignor: **GRAGG FARMS**



S A V RAINDANCE 6848



MUSGRAVE 316 STUNNER

65 Lawsons Stunner M1432

DOB: 3/19/24 Tattoo: M1432 Reg# 21066572

**VQA
BULL**

MUSGRAVE 316 STUNNER

T K STUNNER F655B

T K PRINCESS Z749

BAR R JET BLACK 5063

LAWSONS DONNA H691

LAWSONS DONNA F331

| | Performance | |
|-----|-------------|-------|
| | Weight | Ratio |
| BW | 83 | 104 |
| WW | 649 | 106 |
| ADG | 4.52 | 109 |
| YW | 1248 | 105 |

| CED | BW | WW | YW | SC | HP | MILK | DOC | CLAW | |
|-------|------|----|------|------|------|------|-----|------|-----|
| 7 | 1.8 | 83 | 137 | 1.37 | 11.5 | 21 | 16 | .49 | |
| ANGLE | PAP | CW | MARB | RE | FAT | \$M | \$W | \$B | \$C |
| .39 | 2.35 | 67 | .68 | .46 | .051 | 64 | 71 | 152 | 261 |

Consignor: **LAWSON FAMILY FARMS**

63 Lawsons Stunner M1439

DOB: 4/3/24 Tattoo: M1439 Reg# 21066567

**VQA
BULL**

MUSGRAVE 316 STUNNER

T K STUNNER F655B

T K PRINCESS Z749

COLEMAN ENGAGE 5255

LAWSONS DONNA G527

COLEMAN DONNA 679

| | Performance | |
|-----|-------------|-------|
| | Weight | Ratio |
| BW | 83 | 102 |
| WW | 604 | 98 |
| ADG | 4.27 | 103 |
| YW | 1121 | 95 |

| CED | BW | WW | YW | SC | HP | MILK | DOC | CLAW | |
|-------|-----|----|------|------|------|------|-----|------|-----|
| 10 | 1.5 | 75 | 126 | 1.52 | 11.3 | 26 | 15 | .53 | |
| ANGLE | PAP | CW | MARB | RE | FAT | \$M | \$W | \$B | \$C |
| .48 | .54 | 62 | .39 | .51 | .052 | 65 | 70 | 131 | 235 |

Consignor: **LAWSON FAMILY FARMS**

66 Lawsons Stunner M1427

DOB: 3/4/24 Tattoo: M1427 Reg# 21066570

**VQA
BULL**

MUSGRAVE 316 STUNNER

T K STUNNER F655B

T K PRINCESS Z749

S A V SENSATION 5615

LAWSONS ELBA E283

S A V ELBA 110

| | Performance | |
|-----|-------------|-------|
| | Weight | Ratio |
| BW | 81 | 100 |
| WW | 554 | 90 |
| ADG | 4.34 | 104 |
| YW | 1080 | 91 |

| CED | BW | WW | YW | SC | HP | MILK | DOC | CLAW | |
|-------|-----|----|------|------|-------|------|-----|------|-----|
| 4 | 2.5 | 69 | 118 | 1.53 | 12.8 | 17 | 13 | .55 | |
| ANGLE | PAP | CW | MARB | RE | FAT | \$M | \$W | \$B | \$C |
| .51 | .34 | 49 | .29 | .54 | -.008 | 55 | 52 | 123 | 215 |

Consignor: **LAWSON FAMILY FARMS**

64 Lawsons Stellar M1434

DOB: 3/19/24 Tattoo: M1434 Reg# 21066574

**VQA
BULL**

SITZ STELLAR 726D

SITZ STELLAR 715G

SITZ BARBARAMERE JET 171E

COLEMAN BRAVO 6313

LAWSONS CHLOE G522

LAWSONS CHLOE C815

| | Performance | |
|-----|-------------|-------|
| | Weight | Ratio |
| BW | 81 | 100 |
| WW | 635 | 103 |
| ADG | 4.10 | 99 |
| YW | 1185 | 100 |

| CED | BW | WW | YW | SC | HP | MILK | DOC | CLAW | |
|-------|------|----|------|-----|------|------|-----|------|-----|
| 5 | 1.5 | 68 | 123 | .45 | 12.4 | 31 | 25 | .31 | |
| ANGLE | PAP | CW | MARB | RE | FAT | \$M | \$W | \$B | \$C |
| .42 | 1.22 | 65 | .29 | .92 | .013 | 68 | 64 | 139 | 248 |

Consignor: **LAWSON FAMILY FARMS**



SITZ STELLAR 726D

67 Lawsons Top Shelf M1421

DOB: 2/22/24 Tattoo: M1421 Reg# 21066569

VQA BULL

T K STUNNER F655B

LAWSONS TOP SHELF J888

LAWSONS CHLOE Z341

LAWSONS RENOWN G546

LAWSONS CHLOE J841

LAWSONS CHLOE E234

| | Performance Weight | Ratio |
|-----|--------------------|-------|
| BW | 89 | 114 |
| WW | 611 | 100 |
| ADG | 4.09 | 98 |
| YW | 1142 | 96 |

| CED | BW | WW | YW | SC | HP | MILK | DOC | CLAW | |
|-------|------|----|------|------|------|------|-----|------|-----|
| 2 | 3.4 | 86 | 150 | 1.03 | 9.9 | 26 | 15 | .54 | |
| ANGLE | PAP | CW | MARB | RE | FAT | \$M | \$W | \$B | \$C |
| .47 | 1.90 | 62 | .69 | .72 | .029 | 57 | 71 | 158 | 262 |

Consignor: **LAWSON FAMILY FARMS**

68 Lawsons Resilient M1412

DOB: 2/13/24 Tattoo: M1412 Reg# 21066575

VQA BULL

SITZ STELLAR 726D

SITZ RESILIENT 10208

SITZ MISS BURGESS 1856

DEER VALLEY GROWTH FUND

LAWSONS CHLOE G630

BASIN CHLOE 7T26

| | Performance Weight | Ratio |
|-----|--------------------|-------|
| BW | 80 | 100 |
| WW | 593 | 100 |
| ADG | 4.59 | 110 |
| YW | 1167 | 99 |

| CED | BW | WW | YW | SC | HP | MILK | DOC | CLAW | |
|-------|-------|----|------|------|------|------|-----|------|-----|
| 5 | 1.4 | 89 | 157 | 1.56 | 13.8 | 28 | 13 | .48 | |
| ANGLE | PAP | CW | MARB | RE | FAT | \$M | \$W | \$B | \$C |
| .44 | -1.05 | 67 | .92 | .50 | .079 | 67 | 84 | 166 | 282 |

Consignor: **LAWSON FAMILY FARMS**



SITZ UPWARD 307R



SITZ RESILIENT 10208

69 Lawsons Resilient M1410

DOB: 2/12/24 Tattoo: M1410 Reg# 21066576

VQA BULL

SITZ STELLAR 726D

SITZ RESILIENT 10208

SITZ MISS BURGESS 1856

DEER VALLEY GROWTH FUND

LAWSONS CHLOE G634

BASIN CHLOE 7T26

| | Performance Weight | Ratio |
|-----|--------------------|-------|
| BW | 82 | 100 |
| WW | 594 | 100 |
| ADG | 4.34 | 104 |
| YW | 1119 | 94 |

| CED | BW | WW | YW | SC | HP | MILK | DOC | CLAW | |
|-------|-----|----|------|------|------|------|-----|------|-----|
| 6 | 1.2 | 79 | 143 | 1.01 | 13.7 | 29 | 10 | .47 | |
| ANGLE | PAP | CW | MARB | RE | FAT | \$M | \$W | \$B | \$C |
| .44 | .69 | 66 | .83 | .69 | .026 | 71 | 78 | 173 | 295 |

Consignor: **LAWSON FAMILY FARMS**

70 Lawsons Upward M1401

DOB: 2/7/24 Tattoo: M1401 Reg# 21066577

VQA BULL

CONNELLY ONWARD

SITZ UPWARD 307R

SITZ HENRIETTA PRIDE 81M

VERMILION PAYWEIGHT J847

BASIN CHLOE 7T26

BASIN CHLOE 812L

| | Performance Weight | Ratio |
|-----|--------------------|-------|
| BW | 82 | 100 |
| WW | 596 | 100 |
| ADG | 4.43 | 107 |
| YW | 1128 | 95 |

| CED | BW | WW | YW | SC | HP | MILK | DOC | CLAW | |
|-------|------|----|------|------|-------|------|-----|------|-----|
| 5 | 2.1 | 62 | 121 | 1.50 | 9.9 | 33 | 11 | .56 | |
| ANGLE | PAP | CW | MARB | RE | FAT | \$M | \$W | \$B | \$C |
| .47 | 1.64 | 61 | .36 | .62 | -.023 | 50 | 61 | 147 | 241 |

Consignor: **LAWSON FAMILY FARMS**

71 Lawsons Resilient M1395

DOB: 2/2/24 Tattoo: M1395 Reg# 21027178

VQA BULL

SITZ STELLAR 726D

SITZ RESILIENT 10208

SITZ MISS BURGESS 1856

DEER VALLEY GROWTH FUND

LAWSONS CHLOE G634

BASIN CHLOE 7T26

| | Performance Weight | Ratio |
|-----|--------------------|-------|
| BW | 75 | 100 |
| WW | 546 | 100 |
| ADG | 3.36 | 81 |
| YW | 1096 | 93 |

| CED | BW | WW | YW | SC | HP | MILK | DOC | CLAW | |
|-------|------|----|------|------|------|------|-----|------|-----|
| 10 | -1.3 | 78 | 140 | 1.18 | 12.7 | 28 | 14 | .42 | |
| ANGLE | PAP | CW | MARB | RE | FAT | \$M | \$W | \$B | \$C |
| .41 | 1.07 | 60 | .56 | .64 | .026 | 63 | 77 | 150 | 258 |

Consignor: **LAWSON FAMILY FARMS**



DEER VALLEY GROWTH FUND

72 Lawsons Top Shelf M1396

DOB: 2/1/24 Tattoo: M1396 Reg# 21066568

VQA BULL

T K STUNNER F655B

LAWSONS TOP SHELF J888

LAWSONS CHLOE Z341

EXAR EQUITY 7435B

LAWSONS HENRIETTA PRIDE H824

LAWSONS HENRIETTA PRIDE E103

| | Performance Weight | Ratio |
|-----|--------------------|-------|
| BW | 79 | 101 |
| WW | 610 | 99 |
| ADG | 4.77 | 115 |
| YW | 1180 | 100 |

| CED | BW | WW | YW | SC | HP | MILK | DOC | CLAW | |
|-------|-----|----|------|------|------|------|-----|------|-----|
| 8 | 1.6 | 84 | 145 | 1.24 | 11.9 | 24 | 16 | .56 | |
| ANGLE | PAP | CW | MARB | RE | FAT | \$M | \$W | \$B | \$C |
| .47 | .82 | 68 | .56 | .70 | .045 | 68 | 75 | 159 | 274 |

Consignor: **LAWSON FAMILY FARMS**

73 Lawsons South America M1375

DOB: 1/21/24 Tattoo: M1375 Reg# 21029614

VQA BULL

DON APARICIO SERRUCHO57 MAXI

HUMMEL SOUTH AMERICA

RUBETA FONTANA 7567-T/E-

S A V RENOWN 3439

LAWSONS CHLOE D907

LAWSONS CHLOE Z341

| | Performance Weight | Ratio |
|-----|--------------------|-------|
| BW | 78 | 100 |
| WW | 531 | 100 |
| ADG | 4.38 | 105 |
| YW | 1097 | 93 |

| CED | BW | WW | YW | SC | HP | MILK | DOC | CLAW | |
|-------|------|----|------|-----|------|------|-----|------|-----|
| 5 | 2.4 | 77 | 144 | .87 | 8.3 | 31 | 25 | .43 | |
| ANGLE | PAP | CW | MARB | RE | FAT | \$M | \$W | \$B | \$C |
| .44 | 3.33 | 65 | -.11 | .67 | .056 | 49 | 69 | 117 | 201 |

Consignor: **LAWSON FAMILY FARMS**



CONNEALY CRAFTSMAN

74 Lawsons Craftsman M1371

DOB: 1/18/24 Tattoo: M1371 Reg# 21067248

VQA BULL

SITZ RESILIENT 10208

CONNEALY CRAFTSMAN

BLACK CATHY OF CONANGA 8521

SITZ UPWARD 307R

LAWSONS CHLOE Z341

BASIN CHLOE 7T26

| | Performance Weight | Ratio |
|-----|--------------------|-------|
| BW | 86 | 100 |
| WW | 605 | 100 |
| ADG | 4.71 | 114 |
| YW | 1247 | 105 |

| CED | BW | WW | YW | SC | HP | MILK | DOC | CLAW | |
|-------|------|----|------|-----|------|------|-----|------|-----|
| 2 | 2.2 | 80 | 143 | .72 | 11.7 | 34 | 16 | .47 | |
| ANGLE | PAP | CW | MARB | RE | FAT | \$M | \$W | \$B | \$C |
| .44 | 3.10 | 58 | .73 | .49 | .036 | 77 | 84 | 152 | 274 |

Consignor: **LAWSON FAMILY FARMS**

75 Lawsons Top Shelf M1357

DOB: 1/14/24 Tattoo: M1357 Reg# 21027173

VQA BULL

T K STUNNER F655B

LAWSONS TOP SHELF J888

LAWSONS CHLOE Z341

MUSGRAVE 316 EXCLUSIVE

LAWSONS BVA DONNA H775

LAWSONS DONNA E66

| | Performance Weight | Ratio |
|-----|--------------------|-------|
| BW | 80 | 101 |
| WW | 595 | 91 |
| ADG | 4.59 | 110 |
| YW | 1166 | 98 |

| CED | BW | WW | YW | SC | HP | MILK | DOC | CLAW | |
|-------|------|----|------|------|------|------|-----|------|-----|
| 4 | 2.5 | 83 | 148 | 1.76 | 12.9 | 25 | 28 | .40 | |
| ANGLE | PAP | CW | MARB | RE | FAT | \$M | \$W | \$B | \$C |
| .43 | 2.51 | 63 | .55 | .31 | .064 | 66 | 72 | 148 | 258 |

Consignor: **LAWSON FAMILY FARMS**

76 Lawsons Top Shelf M1346

DOB: 1/9/24 Tattoo: M1346 Reg# 21066573

VQA BULL

T K STUNNER F655B

LAWSONS TOP SHELF J888

LAWSONS CHLOE Z341

MUSGRAVE 316 EXCLUSIVE

LAWSONS LUCY J836

LAWSONS LUCY 1902

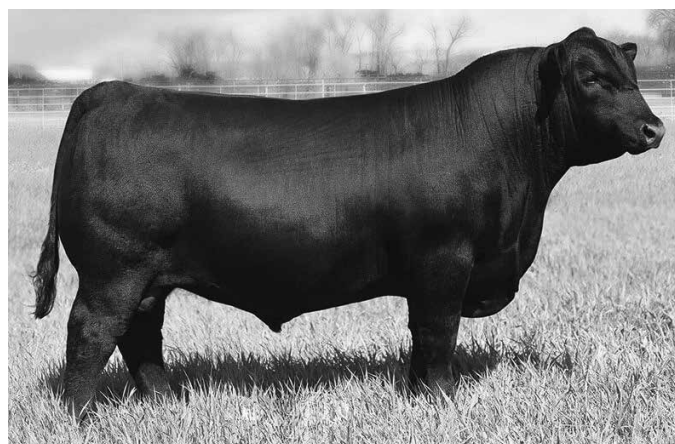
| | Performance Weight | Ratio |
|-----|--------------------|-------|
| BW | 64 | 83 |
| WW | 609 | 99 |
| ADG | 4.57 | 110 |
| YW | 1123 | 95 |

| CED | BW | WW | YW | SC | HP | MILK | DOC | CLAW | |
|-------|------|----|------|------|------|------|-----|------|-----|
| 10 | -1.0 | 75 | 127 | 1.18 | 12.9 | 26 | 15 | .53 | |
| ANGLE | PAP | CW | MARB | RE | FAT | \$M | \$W | \$B | \$C |
| .48 | 1.82 | 49 | .93 | .78 | .039 | 66 | 74 | 154 | 266 |

Consignor: **LAWSON FAMILY FARMS**



G A R SUNRISE



MUSGRAVE 316 STUNNER

77 Matney Craftsman 4216

DOB: 3/3/24 Tattoo: 4216 Reg# 21042946

VQA BULL

SITZ RESILIENT 10208

CONNEALY CRAFTSMAN

BLACK CATHY OF CONANGA 8521

S S NIAGARA Z29

MATNEY NIAGARA 1980

MATNEY SUNRISE 1656

| | Performance Weight | Ratio |
|-----|--------------------|-------|
| BW | 75 | 103 |
| WW | 737 | 108 |
| ADG | 4.50 | 108 |
| YW | 1427 | 120 |

| CED | BW | WW | YW | SC | HP | MILK | DOC | CLAW | |
|-------|------|----|------|-----|------|------|-----|------|-----|
| 4 | 2.5 | 83 | 142 | .53 | 17.7 | 39 | 18 | .32 | |
| ANGLE | PAP | CW | MARB | RE | FAT | \$M | \$W | \$B | \$C |
| .40 | 2.40 | 69 | 1.07 | .86 | .030 | 107 | 92 | 178 | 338 |

Consignor: **MATNEY ANGUS FARM**

78 Matney Commerce 4214

DOB: 3/2/24 Tattoo: 4214 Reg# 21043467

VQA BULL

G A R SUNBEAM

CONNEALY COMMERCE

AVIRA OF CONANGA 814R

G A R CONCRETE

MATNEY CON 1208

MATNEY Y G 0882

| | Performance Weight | Ratio |
|-----|--------------------|-------|
| BW | 73 | 101 |
| WW | 728 | 107 |
| ADG | 4.32 | 104 |
| YW | 1335 | 113 |

| CED | BW | WW | YW | SC | HP | MILK | DOC | CLAW | |
|-------|------|----|------|------|------|------|-----|------|-----|
| 5 | 3.9 | 97 | 163 | 1.21 | 6.7 | 32 | 19 | .49 | |
| ANGLE | PAP | CW | MARB | RE | FAT | \$M | \$W | \$B | \$C |
| .47 | 3.02 | 68 | .60 | .71 | .028 | 62 | 90 | 144 | 249 |

Consignor: **MATNEY ANGUS FARM**



TEHAMA TAHOE B767

81 Matney Tehama Tahoe 4200
 DOB: 2/27/24 Tattoo: 4200 Reg# 21042951
VQA BULL TEHAMA UPWARD Y238

TEHAMA TAHOE B767

TEHAMA MARY BLACKBIRD Y684

S S NIAGARA Z29

MATNEY NIAGARA 2085

MATNEY SUNRISE 1590

| | Performance Weight | Ratio |
|-----|--------------------|-------|
| BW | 71 | 99 |
| WW | 665 | 98 |
| ADG | 3.66 | 88 |
| YW | 1194 | 101 |

| CED | BW | WW | YW | SC | HP | MILK | DOC | CLAW | |
|-------|------|----|------|-----|-------|------|-----|------|-----|
| 3 | 1.6 | 87 | 159 | .30 | 10.4 | 25 | 21 | .47 | |
| ANGLE | PAP | CW | MARB | RE | FAT | \$M | \$W | \$B | \$C |
| .43 | 1.83 | 57 | .87 | .90 | -.002 | 66 | 80 | 164 | 279 |

Consignor: **MATNEY ANGUS FARM**

79 Matney Craftsman 4207
 DOB: 2/29/24 Tattoo: 4207 Reg# 21042945
VQA BULL SITZ RESILIENT 10208

CONNEALY CRAFTSMAN

BLACK CATHY OF CONANGA 8521

S S NIAGARA Z29

MATNEY NIAGARA 1972

MATNEY PARTY 1608

| | Performance Weight | Ratio |
|-----|--------------------|-------|
| BW | 75 | 103 |
| WW | 686 | 101 |
| ADG | 4.63 | 111 |
| YW | 1404 | 119 |

| CED | BW | WW | YW | SC | HP | MILK | DOC | CLAW | |
|-------|-----|----|------|-----|------|------|-----|------|-----|
| 2 | 3.1 | 93 | 168 | .37 | 13.7 | 33 | 23 | .41 | |
| ANGLE | PAP | CW | MARB | RE | FAT | \$M | \$W | \$B | \$C |
| .47 | .92 | 83 | 1.24 | .88 | .099 | 86 | 89 | 202 | 348 |

Consignor: **MATNEY ANGUS FARM**

80 JET Craftsman 4206
 DOB: 2/28/24 Tattoo: 4206 Reg# 21042987
VQA BULL M1P SITZ RESILIENT 10208

CONNEALY CRAFTSMAN

BLACK CATHY OF CONANGA 8521

JINDRA ACCLAIM

TE SURE ACCLAIM 2032

MATNEY SURE FIRE 1850

| | Performance Weight | Ratio |
|-----|--------------------|-------|
| BW | 70 | 99 |
| WW | 704 | 112 |
| ADG | 4.71 | 114 |
| YW | 1399 | 118 |

| CED | BW | WW | YW | SC | HP | MILK | DOC | CLAW | |
|-------|-------|----|------|-----|------|------|-----|------|-----|
| 6 | 1.2 | 87 | 156 | .60 | 10.3 | 37 | 19 | .51 | |
| ANGLE | PAP | CW | MARB | RE | FAT | \$M | \$W | \$B | \$C |
| .48 | -1.78 | 80 | 1.27 | .61 | .063 | 63 | 90 | 204 | 328 |

Consignor: **MATNEY ANGUS/JET FARMS**

82 Matney Big Valley 2493
 DOB: 2/26/24 Tattoo: 2493 Reg# 21042958
VQA BULL CONNEALY DRY VALLEY

CONNEALY BIG VALLEY

BUNTY LAY OF CONANGA 4930

CONNEALY GARY 756X

MATNEY GARY 1213

MATNEY DAYLIGHT 7131

| | Performance Weight | Ratio |
|-----|--------------------|-------|
| BW | 71 | 101 |
| WW | 711 | 104 |
| ADG | 4.20 | 101 |
| YW | 1346 | 114 |

| CED | BW | WW | YW | SC | HP | MILK | DOC | CLAW | |
|-------|------|----|------|------|------|------|-----|------|-----|
| 9 | .1 | 76 | 132 | .72 | 12.1 | 31 | 18 | .58 | |
| ANGLE | PAP | CW | MARB | RE | FAT | \$M | \$W | \$B | \$C |
| .56 | 2.54 | 71 | .65 | 1.07 | .011 | 57 | 78 | 168 | 275 |

Consignor: **MATNEY ANGUS FARM**



CONNEALY CRAFTSMAN

83 JET Teamwork 2485

DOB: 2/24/24 Tattoo: 2485 Reg# 21005144

**VQA
BULL**

E W A PEYTON 642

E W A TEAMWORK 821

E W A 543 OF 117 WEIGH UP

MATNEY COMRADE 1707

ROSEVERA'S COMRADE 2010

LYN LEW ROSEVERA 64L

| | Performance Weight | Ratio |
|-----|--------------------|-------|
| BW | 71 | 100 |
| WW | 615 | 97 |
| ADG | 4.61 | 111 |
| YW | 1327 | 112 |

| CED | BW | WW | YW | SC | HP | MILK | DOC | CLAW | |
|-------|------|----|------|------|------|------|-----|------|-----|
| 14 | -1.6 | 71 | 129 | -.41 | 9.5 | 27 | 19 | .66 | |
| ANGLE | PAP | CW | MARB | RE | FAT | \$M | \$W | \$B | \$C |
| .58 | 1.96 | 63 | .78 | 1.14 | .084 | 59 | 74 | 176 | 287 |

Consignor: **MATNEY ANGUS/JET FARMS**



E W A PEYTON 642

84 Matney Big Valley 2481

DOB: 2/23/24 Tattoo: 2481 Reg# 21045062

**VQA
BULL**

CONNELLY DRY VALLEY

CONNELLY BIG VALLEY

BUNTY LAY OF CONANGA 4930

G A R SURE FIRE

MATNEY SURE FIRE 2128

MATNEY NIAGARA 1972

| | Performance Weight | Ratio |
|-----|--------------------|-------|
| BW | 71 | 101 |
| WW | 686 | 101 |
| ADG | 4.63 | 111 |
| YW | 1376 | 116 |

| CED | BW | WW | YW | SC | HP | MILK | DOC | CLAW | |
|-------|-----|----|------|-----|------|------|-----|------|-----|
| 10 | .6 | 63 | 119 | .77 | 12.7 | 28 | 25 | .61 | |
| ANGLE | PAP | CW | MARB | RE | FAT | \$M | \$W | \$B | \$C |
| .53 | .33 | 53 | .94 | .93 | .039 | 62 | 62 | 162 | 272 |

Consignor: **MATNEY ANGUS FARM**

85 Matney Big Valley 2480

DOB: 2/23/24 Tattoo: 2480 Reg# 21042959

**VQA
BULL**

CONNELLY DRY VALLEY

CONNELLY BIG VALLEY

BUNTY LAY OF CONANGA 4930

CONNELLY GARY 756X

MATNEY GARY 1230

MATNEY SURE FIRE 1843

| | Performance Weight | Ratio |
|-----|--------------------|-------|
| BW | 68 | 97 |
| WW | 688 | 101 |
| ADG | 4.63 | 111 |
| YW | 1354 | 114 |

| CED | BW | WW | YW | SC | HP | MILK | DOC | CLAW | |
|-------|-----|----|------|------|-------|------|-----|------|-----|
| 9 | 2.1 | 81 | 153 | .74 | 8.2 | 25 | 34 | .65 | |
| ANGLE | PAP | CW | MARB | RE | FAT | \$M | \$W | \$B | \$C |
| .68 | .86 | 76 | .63 | 1.11 | -.008 | 40 | 67 | 182 | 276 |

Consignor: **MATNEY ANGUS FARM**



S S NIAGARA Z29

86 Matney SS Niagara 2479

DOB: 2/23/24 Tattoo: 2479 Reg# 21042968

**VQA
BULL**

HOOVER DAM

S S NIAGARA Z29

JET S S X144

CONNELLY GARY 756X

MATNEY GARY 226

MATNEY PARTY 1608

| | Performance Weight | Ratio |
|-----|--------------------|-------|
| BW | 67 | 103 |
| WW | 720 | 100 |
| ADG | 4.30 | 104 |
| YW | 1209 | 102 |

| CED | BW | WW | YW | SC | HP | MILK | DOC | CLAW | |
|-------|------|----|------|-----|------|------|-----|------|-----|
| 4 | 2.2 | 92 | 163 | .57 | 11.9 | 30 | 18 | .54 | |
| ANGLE | PAP | CW | MARB | RE | FAT | \$M | \$W | \$B | \$C |
| .59 | 3.31 | 84 | .75 | .94 | .063 | 50 | 84 | 178 | 281 |

Consignor: **MATNEY ANGUS FARM**

87 Matney Stagecoach 2459

DOB: 2/20/24 Tattoo: 2459 Reg# 21042947

**VQA
BULL**

TEHAMA TAHOE B767

HOFFMAN STAGECOACH 1908

BSG COUNTESS 1705 OF 028

S S NIAGARA Z29

MATNEY NIAGARA 1920

MATNEY DAYLIGHT 1760

| | Performance Weight | Ratio |
|-----|--------------------|-------|
| BW | 71 | 97 |
| WW | 710 | 104 |
| ADG | 4.07 | 98 |
| YW | 1329 | 112 |

| CED | BW | WW | YW | SC | HP | MILK | DOC | CLAW | |
|-------|------|----|------|------|-------|------|-----|------|-----|
| 6 | 1.7 | 86 | 150 | .57 | 12.3 | 28 | 13 | .46 | |
| ANGLE | PAP | CW | MARB | RE | FAT | \$M | \$W | \$B | \$C |
| .41 | 2.16 | 77 | .68 | 1.03 | -.025 | 58 | 80 | 181 | 293 |

Consignor: **MATNEY ANGUS FARM**



CONNELY BIG VALLEY

88 Matney Patriarch 2453

DOB: 2/20/24 Tattoo: 2453 Reg# 21042962

**VQA
BULL**

S S NIAGARA Z29

TEHAMA PATRIARCH F028

TEHAMA ELITE BLACKBIRD D826

G A R SURE FIRE

MATNEY SURE FIRE 1200

MATNEY SUNRISE 7138

| | Performance Weight | Ratio |
|-----|--------------------|-------|
| BW | 69 | 99 |
| WW | 696 | 102 |
| ADG | 4.54 | 109 |
| YW | 1438 | 121 |

| CED | BW | WW | YW | SC | HP | MILK | DOC | CLAW | |
|-------|------|----|------|------|------|------|-----|------|-----|
| 6 | 2.1 | 81 | 153 | 1.39 | 9.2 | 33 | 23 | .57 | |
| ANGLE | PAP | CW | MARB | RE | FAT | \$M | \$W | \$B | \$C |
| .51 | 1.28 | 59 | 1.03 | .25 | .075 | 50 | 76 | 155 | 251 |

Consignor: **MATNEY ANGUS FARM**

89 Matney Conn Big Valley 2447

DOB: 2/19/24 Tattoo: 2447 Reg# 20971269

**VQA
BULL**

CONNELY DRY VALLEY

CONNELY BIG VALLEY

BUNTY LAY OF CONANGA 4930

MATNEY NIAGARA 7115

MATNEY NIAGARA 7115-2105

MATNEY CON 1214

| | Performance Weight | Ratio |
|-----|--------------------|-------|
| BW | 69 | 99 |
| WW | 738 | 108 |
| ADG | 4.45 | 107 |
| YW | 1364 | 115 |

| CED | BW | WW | YW | SC | HP | MILK | DOC | CLAW | |
|-------|------|----|------|------|------|------|-----|------|-----|
| 14 | 1.1 | 79 | 145 | 1.06 | 11.1 | 25 | 22 | .44 | |
| ANGLE | PAP | CW | MARB | RE | FAT | \$M | \$W | \$B | \$C |
| .47 | 1.41 | 76 | .72 | .98 | .040 | 66 | 73 | 181 | 301 |

Consignor: **MATNEY ANGUS FARM**



TEHAMA TAHOE B767

90 Matney Tehama Tahoe 2425

DOB: 2/14/24 Tattoo: 2425 Reg# 21042970

**VQA
BULL**

TEHAMA UPWARD Y238

TEHAMA TAHOE B767

TEHAMA MARY BLACKBIRD Y684

CRAWFORD GUARANTEE 9137

MATNEY GUARANTEE 9137-217

MATNEY SUNRISE 7123

| | Performance Weight | Ratio |
|-----|--------------------|-------|
| BW | 69 | 105 |
| WW | 785 | 134 |
| ADG | 4.63 | 111 |
| YW | 1350 | 114 |

| CED | BW | WW | YW | SC | HP | MILK | DOC | CLAW | |
|-------|------|-----|------|------|------|------|-----|------|-----|
| 11 | .4 | 101 | 170 | .54 | 15.8 | 27 | 18 | .62 | |
| ANGLE | PAP | CW | MARB | RE | FAT | \$M | \$W | \$B | \$C |
| .46 | 2.98 | 75 | .67 | 1.03 | .009 | 82 | 101 | 171 | 304 |

Consignor: **MATNEY ANGUS FARM**

91 JET Gary 2402

DOB: 1/9/24 Tattoo: 2402 Reg# 21042950

VQA BULL

CONNEALY GARY

CONNEALY GARY 756X

JAZZEEN OF CONANGA 4660 756X

MATNEY NIAGARA 7115

MATNEY NIAGARA S0214

MATNEY PREDESTINED-1059

| | Performance Weight | Ratio |
|-----|--------------------|-------|
| BW | 71 | 99 |
| WW | 706 | 100 |
| ADG | 4.36 | 105 |
| YW | 1382 | 117 |

| CED | BW | WW | YW | SC | HP | MILK | DOC | CLAW | |
|-------|-----|----|------|-----|------|------|-----|------|-----|
| 12 | .4 | 65 | 118 | .61 | 5.7 | 30 | 15 | .47 | |
| ANGLE | PAP | CW | MARB | RE | FAT | \$M | \$W | \$B | \$C |
| .59 | .66 | 65 | 1.24 | .51 | .082 | 50 | 68 | 188 | 294 |

Consignor: **MATNEY ANGUS/JET FARMS**



CONNEALY GARY 756X

92 Nester Identified 029M

DOB: 1/29/24 Tattoo: 29M Reg# 20891953

VQA BULL

MILL BRAE IDENTIFIED 4031

SS IDENTIFIED 7551

G A R PROPHET 1463

G A R SCALE HOUSE

RWA SCALE HOUSE W2508

DEER VALLEY RITA 4226

| | Performance Weight | Ratio |
|-----|--------------------|-------|
| BW | 81 | 98 |
| WW | 610 | 100 |
| ADG | 4.43 | 107 |
| YW | 1065 | 90 |

| CED | BW | WW | YW | SC | HP | MILK | DOC | CLAW | |
|-------|------|----|------|-----|------|------|-----|------|-----|
| 7 | 1.9 | 92 | 162 | .28 | 7.4 | 30 | 20 | .61 | |
| ANGLE | PAP | CW | MARB | RE | FAT | \$M | \$W | \$B | \$C |
| .51 | 4.17 | 80 | 1.30 | .89 | .001 | 70 | 91 | 203 | 333 |

Consignor: **NESTER ANGUS**



E W A PEYTON 642

93 Nester Inertia 001E

DOB: 1/29/24 Tattoo: 001E Reg# 21087762

VQA BULL

G A R MOMENTUM

G A R INERTIA

G A R PROPHET 2984

RITO 9Q20 OF RITA 5F56 GHM

SPRUCE MTN ELBA 6516

EXAR ELBA 4095

| | Performance Weight | Ratio |
|-----|--------------------|-------|
| BW | 63 | 100 |
| WW | 564 | 100 |
| ADG | 4.84 | 117 |
| YW | 1202 | 101 |

| CED | BW | WW | YW | SC | HP | MILK | DOC | CLAW | |
|-------|------|----|------|------|------|------|-----|------|-----|
| 6 | 1.8 | 72 | 127 | 1.26 | 7.0 | 28 | 18 | .53 | |
| ANGLE | PAP | CW | MARB | RE | FAT | \$M | \$W | \$B | \$C |
| .51 | 2.31 | 60 | .95 | .51 | .052 | 45 | 68 | 176 | 273 |

Consignor: **NESTER ANGUS**

94 Ogle Transcend 48X

DOB: 3/22/24 Tattoo: 48X Reg# 21037128

VQA BULL

G A R TRANSCENDENT

WILLIAMS TRANSCENDENT 12-315

WILLIAMS P ERICA 700-435

SITZ STELLAR 726D

BRITT'S MORRISON H6

LEMMON MORRISON A237

| | Performance Weight | Ratio |
|-----|--------------------|-------|
| BW | 73 | 109 |
| WW | 636 | 94 |
| ADG | 4.98 | 120 |
| YW | 1290 | 109 |

| CED | BW | WW | YW | SC | HP | MILK | DOC | CLAW | |
|-------|------|----|------|-----|------|------|-----|------|-----|
| 3 | 2.5 | 80 | 141 | .03 | 14.7 | 27 | 16 | .42 | |
| ANGLE | PAP | CW | MARB | RE | FAT | \$M | \$W | \$B | \$C |
| .38 | -.04 | 68 | 1.01 | .75 | .017 | 71 | 68 | 170 | 291 |

Consignor: **OGLE FARM/DAVID OGLE**

BERKSHIRE HATHAWAY

HomeServices



Smith Reasor
Realtor®

Mountain Sky Properties
Serving Southwest Virginia
and the New River Valley
Cell: (276) 620-3123
Office: (276) 228-8882
smithreasorsell@gmail.com
www.swvarealty.com

Ⓜ A member of the franchise system of BHH Affiliates, LLC



*Your visit
is always
welcome!*

Anderson & Son's

Meat Processing

- USDA Inspected
- Beef
- Lamb
- Pork
- Deer (24/7 drop-off available)

We are a family owned and operated processing facility conveniently located 3 miles from downtown Abingdon, VA. We are here to serve the Tri-state area for generations to come.

As we set out on this journey, providing quality in every cut along with customer satisfaction being our number one goal.

276-623-3623
13200 Chip Ridge Road, Abingdon, VA
andersonandsonsm meats.com

Tommy Tabor

Commercial Residential Farm



540-616-6181 (cell)
540-674-6181 (office)

5916 Cleburne Blvd
Dublin, Va 24084
vafence@outlook.com

ONLINE BIDDING



Pre-Registration & Pre-Approval Required

**Contact Aaron Ray Tompkins
336.363.4639**

**LIVE INTERNET BIDDING AT
www.cowbuyer.com**

- View/bid online in Real Time
- **Registration is required.** Please register at least one (1) hour prior to sale time at www.cowbuyer.com
- High Speed Internet is required. Slower speed will not permit you to bid and keep pace in real time.
- Terms: Purchasing online constitutes a legal contract and promise for payment of purchases. All purchases must be paid within ten (10) days of sale date and prior to load out or delivery of cattle purchased.
- Cowbuyer LLC is a service provider and is not responsible for the activity or inactivity of any technology, internet connection at the sale site or connection and technology of the bidders.
- No App required on mobile devices.

Questions please contact:

Aaron Ray Tompkins – 336-363-4639

**LAWSON
BUILDING
SUPPLY, INC**

LAWSON BUILDING SUPPLY, INC
111 ENTERPRISE DRIVE
ROSE HILL, VA 24281
276-445-5411
WWW.LAWSONSKUBOTA.COM

*Your hometown
Kubota dealer of
choice*



0%
APR | UP TO 60^{MOS}

— PLUS —

\$1,000*

SAVE UP TO



KubotaUSA.com

**Based on EDA/UCC Data from 01/01/2019 - 12/31/2023 for sales of new compact tractors 0-200 Hp in the USA. © Kubota Tractor Corporation, 2025. \$0 Down, 0% A.P.R. financing for up to 60 months on purchases of new Kubota BX2380 equipment, \$0 Down, 0.99% A.P.R. financing for up to 36 months or customer instant rebates of \$250 are available on purchases of new Kubota Z422 equipment, \$0 Down, 0.99% A.P.R. financing for up to 24 months or customer instant rebates of \$500 are available on purchases of new Kubota RTV-XG850 equipment from participating dealers' in-stock inventory is available to qualified purchasers through Kubota Credit Corporation, U.S.A.; subject to credit approval. Example: 60 monthly payments of \$16.67 per \$1000 financed. Customer instant rebates include Orange Plus Attachment Instant Rebate of \$200 with purchase of the third qualifying new implement and \$200 for the fourth new qualifying implement. There is no rebate on the first and second implement purchased. Offers expire 6/30/2025. Terms subject to change. This material is for descriptive purposes only. Kubota disclaims all representations and warranties, express or implied, or any liability from the use of this material. For complete warranty, disclaimer, safety, incentive offer and product information, consult your Dealer or KubotaUSA.com. Your Kubota Limited warranty gives you specific legal rights. You may have other rights which vary from state to state. 6 years limited warranty or 2000 hours (whichever occurs first).



2025 EXTRA BULL INFORMATION

| LOT | FS | M | S | TS | SC | Rump Fat | Rib Fat | RE | IM | \$W | \$B | \$C |
|-----|-----|---|---|----|------|----------|---------|------|------|------|------|------|
| 51 | 6.8 | 3 | 3 | 15 | 38.0 | .45 | .28 | 14.3 | 5.49 | +68 | +188 | +322 |
| 52 | 5.6 | 4 | 3 | 15 | 37.0 | .47 | .30 | 12.8 | 6.67 | +55 | +176 | +305 |
| 53 | 5.5 | 3 | 2 | 13 | 36.0 | .24 | .22 | 12.7 | 5.07 | +73 | +176 | +290 |
| 54 | 5.5 | 4 | 2 | 13 | 34.5 | .31 | .21 | 11.7 | 4.57 | +76 | +173 | +286 |
| 55 | 5.2 | 4 | 3 | 14 | 37.0 | .36 | .36 | 13.7 | 3.72 | +72 | +127 | +228 |
| 56 | 6.2 | 4 | 3 | 13 | 35.5 | .29 | .32 | 13.5 | 4.46 | +84 | +172 | +298 |
| 57 | 6.3 | 4 | 4 | 13 | 40.0 | .32 | .25 | 12.4 | 3.36 | +62 | +147 | +250 |
| 58 | 7.3 | 3 | 3 | 13 | 38.0 | .32 | .29 | 12.2 | 4.02 | +71 | +135 | +242 |
| 59 | 6.2 | 4 | 3 | 15 | 38.5 | .30 | .20 | 13.6 | 3.43 | +65 | +124 | +214 |
| 60 | 7.0 | 3 | 3 | 13 | 37.5 | .32 | .23 | 14.0 | 2.8 | +73 | +137 | +234 |
| 61 | 6.3 | 3 | 3 | 13 | 38.5 | .33 | .27 | 14.4 | 4.32 | +64 | +140 | +248 |
| 62 | 5.7 | 3 | 3 | 13 | 32.5 | .29 | .35 | 13.7 | 5.51 | +70 | +156 | +290 |
| 63 | 6.4 | 4 | 3 | 14 | 37.0 | .40 | .36 | 12.6 | 3.35 | +70 | +131 | +235 |
| 64 | 6.7 | 4 | 3 | 13 | 39.0 | .28 | .28 | 14.0 | 3.41 | +64 | +139 | +248 |
| 65 | 6.2 | 4 | 4 | 16 | 38.0 | .52 | .40 | 13.6 | 3.83 | +71 | +152 | +261 |
| 66 | 6.0 | 4 | 3 | 15 | 37.0 | .25 | .20 | 12.4 | 3.01 | +52 | +123 | +215 |
| 67 | 5.8 | 4 | 3 | 14 | 39.0 | .35 | .28 | 13.5 | 5.36 | +71 | +158 | +262 |
| 68 | 6.0 | 4 | 3 | 16 | 40.0 | .52 | .43 | 13.0 | 5.81 | +84 | +166 | +282 |
| 69 | 6.2 | 3 | 3 | 14 | 34.5 | .34 | .24 | 13.2 | 4.17 | +78 | +173 | +295 |
| 70 | 5.6 | 4 | 3 | 14 | 40.0 | .28 | .21 | 11.7 | 3.15 | +61 | +147 | +241 |
| 71 | 6.1 | 3 | 4 | 13 | 38.5 | .31 | .20 | 11.8 | 2.71 | +77 | +150 | +258 |
| 72 | 5.1 | 4 | 3 | 15 | 38.0 | .33 | .36 | 12.6 | 3.68 | +75 | +159 | +274 |
| 73 | 5.2 | 4 | 3 | 15 | 35.0 | .40 | .48 | 11.4 | 4.06 | +69 | +117 | +201 |
| 74 | 5.9 | 4 | 3 | 14 | 37.0 | .45 | .31 | 11.5 | 4.71 | +84 | +152 | +274 |
| 75 | 5.1 | 4 | 3 | 15 | 40.0 | .32 | .40 | 11.8 | 3.85 | +72 | +148 | +258 |
| 76 | 5.8 | 3 | 3 | 14 | 37.5 | .38 | .32 | 13.7 | 6.35 | +74 | +154 | +266 |
| 77 | 6.9 | 4 | 3 | 16 | 39.0 | .43 | .37 | 14.4 | 5.63 | +92 | +178 | +338 |
| 78 | 6.2 | 4 | 3 | 15 | 36.5 | .51 | .29 | 13.8 | 4.45 | +90 | +144 | +249 |
| 79 | 7.4 | 4 | 3 | 15 | 39.0 | .47 | .54 | 12.8 | 5.34 | +89 | +202 | +348 |
| 80 | 7.4 | 4 | 3 | 16 | 38.5 | .43 | .28 | 13.8 | 5.79 | +90 | +204 | +328 |
| 81 | 6.4 | 4 | 3 | 13 | 33.0 | .35 | .25 | 14.3 | 4.79 | +80 | +164 | +279 |
| 82 | 6.1 | 4 | 3 | 15 | 38.0 | .36 | .47 | 14.9 | 5.27 | +78 | +168 | +275 |
| 83 | 6.3 | 4 | 3 | 13 | 36.0 | .24 | .31 | 16.0 | 4.40 | +74 | +176 | +287 |
| 84 | 6.6 | 4 | 3 | 16 | 38.0 | .38 | .36 | 15.6 | 5.36 | +62 | +162 | +272 |
| 85 | 5.6 | 4 | 3 | 16 | 39.0 | .34 | .45 | 15.4 | 5.91 | +67 | +182 | +276 |
| 86 | 6.3 | 4 | 3 | 15 | 39.5 | .49 | .56 | 14.5 | 4.77 | +84 | +178 | +281 |
| 87 | 6.3 | 4 | 3 | 15 | 39.0 | .38 | .31 | 15.1 | 5.12 | +80 | +181 | +293 |
| 88 | 7.1 | 4 | 3 | 14 | 39.0 | .54 | .48 | 12.4 | 5.61 | +76 | +155 | +251 |
| 89 | 5.8 | 4 | 3 | 12 | 38.0 | .23 | .46 | 15.7 | 5.04 | +73 | +181 | +301 |
| 90 | 7.0 | 4 | 3 | 16 | 37.0 | .38 | .26 | 15.5 | 4.81 | +101 | +171 | +304 |
| 91 | 6.8 | 4 | 3 | 14 | 39.5 | .42 | .58 | 11.8 | 5.36 | +68 | +188 | +294 |
| 92 | 6.5 | 3 | 3 | 13 | 34.5 | .26 | .11 | 10.9 | 4.89 | +91 | +203 | +333 |
| 93 | 5.5 | 3 | 3 | 13 | 39.5 | .24 | .22 | 12.8 | 4.23 | +68 | +176 | +273 |
| 94 | 6.9 | 4 | 3 | 15 | 39.0 | .33 | .27 | 15.5 | 5.46 | +68 | +170 | +291 |